

**Facilities Committee  
GOB Invoices -May 2015**

Facility Finance  
Review Review

**New Pivik Elementary (Series of 2010)**

		Total	\$	-	
--	--	-------	----	---	--

**ASAP - Old Pivik (Series A of 2012)**

x		Duquesne Light Company	\$	892.14	Electricity - March 2015
x		UGI Energy	\$	2,596.41	Equitable gas March 2015
x		Constellation	\$	1,437.15	Electricity - March 2015
x		Windstream	\$	78.35	Telephone Service -April 2015
x		Windstream	\$	131.39	Telephone Service - April 2015
x		Comcast	\$	172.53	Extend Phone Lines-Monitor Fire alarms
x		Andrew & Price	\$	50.00	Legal- 3/31/15
		Total	\$	5,357.97	

**New Holiday Park Elementary (Series A of 2012)**

x		Duquesne Light Company	\$	675.29	Electricity - March 2015
x		Duquesne Light Company	\$	1,907.58	Electricity -March 2015
x		Equitable Gas	\$	3,849.93	Equitable gas March 2015
x		Hudson Construction, Inc.	\$	270,026.99	Construction thru 04/29/2015
x		Lugaila Mechanical Inc.	\$	22,390.55	HVAC Services thru 4/30/15
x		Rucon, Inc.	\$	14,300.00	May 2015 Services
x		Vern's Electric, Inc.	\$	149,362.79	Electrical Services thru 4/30/15
x		Vrabel Plumbing Company, LLC	\$	15,282.80	Plumbing Services thru 4/21/2015
x		Windstream	\$	100.79	Construction Mgr. Data April 2015
		Total	\$	477,896.72	

**Capital Improvements- Facilities, Technology (Series B of 2012)**

		Total	\$	-	
--	--	-------	----	---	--

**Capital Improvements - Facilities, Technology (Series E of 2013)**

		Total	\$	-	

**Regency Elementary (2014 Bond Issue -RP)**

x		Andrews & Price	\$	320.00	RP Legal 3/31/15
x		A.G. Mauro	\$	2,420.00	New Panic Hardware
		Total	\$	2,740.00	

**Greensburg Road Bus Garage (2014 Bond Issue -RP)**

x		Andrews & Price	\$	830.00	Bus Garage Legal 3/31/15
x		Duquesne Light	\$	546.00	Bus Garage Security Deposit
x		Duquesne Light	\$	681.00	Bus Garage Security Deposit
x		Duquesne Light	\$	3,320.00	Bus Garage Security Deposit
		Total	\$	5,377.00	

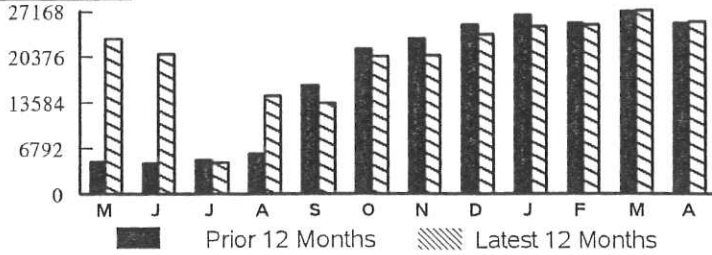
AS@P – Old Pivik

(Series A of 2012)

**Usage & Demand Information**

Next Scheduled Meter Reading Date: May 6, 2015

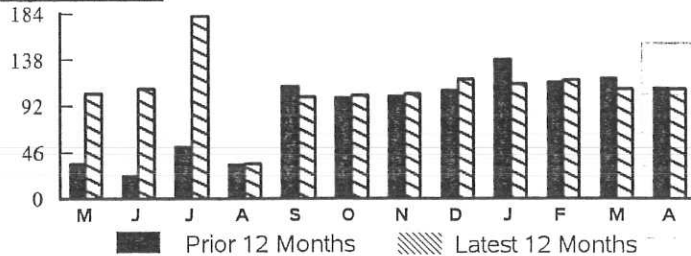
**kWh Usage:**



- Average Monthly Usage for the past 12 months is 20330 kWh.
- Total Annual Usage for the past 12 months is 243960 kWh.
- The average temperature for the billing period was 2 degrees warmer than last year.

The Price to Compare (PTC) for your rate class is 8.24 cents/kWh. It will change every June & December. Your actual PTC may differ based on your demand & usage kWh. For more information & supplier offers visit [www.oca.state.pa.us](http://www.oca.state.pa.us).

**Billing Demand:**



**Summary**

**Prior Billing Information**

Total Amount of Last Bill	\$1,735.46
Total Payment(s) Received as-of- 03/10/15	-\$937.43
Total Amount Owed From Your Last Bill	\$798.03
DLC Basic Service Charges	\$892.14
<b>TOTAL ACCOUNT BALANCE PAYABLE TO DLC</b>	<b>\$1,690.17</b>

**ACTUAL METER READING BILL**

\* See pages 3 and 4 for a complete breakdown of charges.  
For more information see [www.duquesnelight.com](http://www.duquesnelight.com).

Give to Dollar Energy Fund to help people without heat or light. Make a monthly pledge at [www.duquesnelight.com](http://www.duquesnelight.com) or send a check to Duquesne Light Hardship Fund Donations, 411 Seventh Avenue MD 15-1, Pittsburgh, PA 15219. Your gift is tax deductible.

13454  
892.14  
SCANNED  
APR 14 2015  
MK-4-15-15  
ERIC RYAN CORP.

Estimated PA State Taxes	Late Charge After May 11, 2015	Payment Due	Amount Due
\$60.67	1.25%	May 11, 2015	\$1,690.17

Please return this portion with your payment. Please enclose check facing forward.  
Make payment payable to Duquesne Light Company.

Account Number  
3061310000

PLEASE PAY THIS AMOUNT BY **MAY 11, 2015**  
**\$1,690.17**

PLUM BOROUGH SCHOOL DIST  
C/O ACCTS PAYABLE/REC  
PO BOX 836  
ELLWOOD CITY, PA 16117-0836

DUQUESNE LIGHT COMPANY  
PAYMENT PROCESSING CENTER  
PO BOX 10  
PITTSBURGH, PA 15230-0010



UGI Energy Services, LLC  
 dba UGI EnergyLink  
 One Meridian Blvd., Suite 2C01  
 Wyomissing, PA 19610  
 (800) 427-8545

RECEIVED  
 APR 23 2015  
 BY: \_\_\_\_\_

Invoice Number: G2679481  
 Invoice Date: 04/16/2015  
 Salesperson: Auld  
 Gas Utility: EQUITABLE

PLUM BOROUGH SCHOOL DISTRICT AUTHORITY  
 PO BOX 980  
 ELLWOOD CITY, PA 16117-0980

SCANNED

APR 21 2015  
 ERIC RYAN CORP

Customer No: PLUM510

MONTH  
 Mar-2015

Facility: 100 SCHOOL ROAD - EQUITABLE Acct Num: 003731460000034  
 Meter: 1502541

Service Period: 02/26/2015 - 03/30/2015

Quantity	Unit	Description	Price	Amount
765	DTH	Full Requirements	3.394	\$2,596.41

Net Volume: 765 DTH      Fac./Mtr Total Cost: \$2,596.41

Facility: 151 SCHOOL ROAD - EQUITABLE Acct Num: 003731460000042  
 Meter: 1822013

Service Period: 02/26/2015 - 03/30/2015

Quantity	Unit	Description	Price	Amount
510	DTH	Full Requirements	3.394	\$1,730.94

Net Volume: 510 DTH      Fac./Mtr Total Cost: \$1,730.94

Facility: 3411 LEECHBURG RD - EQUITABLE Acct Num: 003731460000026  
 Meter: 1848227

Service Period: 02/26/2015 - 03/30/2015

Quantity	Unit	Description	Price	Amount
83	DTH	Full Requirements	3.394	\$281.70

Net Volume: 83 DTH      Fac./Mtr Total Cost: \$281.70

Facility: 440 PRESQUA ISLE DR - EQUITABLE Acct Num: 003250040000018  
 Meter: 1756702

Questions about your bill please call UGI Energy Services, LLC at  
 1-800-427-8545 or 610-373-7999  
 Make Checks Payable to UGI Energy Services, LLC

APPROVAL		2,596.41	
APPROVAL			MILL 4-23-15

Please return this portion with your payment payable to:

UGI Energy Services, LLC  
 P.O. Box 827032  
 Philadelphia, PA 19182

Customer No: PLUM510  
 Invoice Number: G2679481

DUE DATE 05/01/2015

PLUM BOROUGH SCHOOL DISTRICT AUTHORITY  
 PO BOX 980  
 ELLWOOD CITY, PA 16117-0980

Amount Due \$19,824.35

Late charges applied if paid  
 after due date



# Constellation

An Exelon Company

Plum Borough School District  
PO BOX 836  
ELLWOOD CITY, PA 16117-0836

CNE CUSTOMER ID  
MA\_20227

STATEMENT NO.  
0023493016

PAGE  
1 of 4

CNE ACCOUNT ID  
1-7EC-2822

STATEMENT DATE  
04/11/2015

DUE DATE  
05/01/2015

RECEIVED  
APR 20 2015

ASAP

For questions or comments, please contact Customer Care at (888)635-0827 Monday through Friday 7:00 am to 6:00 pm Central Standard Time, or email us at customercare@constellation.com.

BY:

### ACCOUNT BALANCE

PREVIOUS STATEMENT DATE	03/11/2015
PREVIOUS BALANCE	\$1,530.44
PAYMENTS SINCE LAST INVOICE	at \$-1,636.25
DEBITS/CREDITS SINCE LAST INVOICE	\$0.00
LATE/FINANCE FEE	\$0.00
CURRENT CHARGES	\$1,542.96
<b>TOTAL AMOUNT DUE</b>	<b>\$1,437.15</b>

When contacting Constellation, please reference the CNE ACCOUNT ID found at the top of this page.

Implement energy conservation measures with no upfront capital outlay. Efficiency Made Easy (EME) is a unique solution that lets you include the cost of efficiency upgrades on your electricity bill, and pay for the upgrades over the term of your contract. To learn more, contact us at 1-866-237-7693

If you are already an EME customer, we thank you for your business.

ASAP

AMOUNT	1437.15
APPROVAL	mcw 4-16-15

SCANNED

APR 17 2015

ERIC RYAN CORP

WIRE TRANSFER INFORMATION:  
Constellation NewEnergy, Inc.  
ABA-ACH #111000012, ABA-WIRE #026009593  
ACCT #4426223690  
BANK: Bank of America

REMITTANCE ADDRESS:  
Constellation NewEnergy, Inc.  
14217 Collections Center Dr.  
Chicago IL, 60693

PLEASE RETURN THIS PORTION WITH PAYMENT AND MAKE ALL CHECKS PAYABLE TO Constellation NewEnergy, Inc.



# Constellation \$

An Exelon Company

ENTER AMOUNT ENCLOSED

Write account number on check and make payable to Constellation NewEnergy, Inc.



S	M	T	May W	T	F	S
					1	2
3	4	5	6	7	8	9
10	11	12	13	14	15	16
17	18	19	20	21	22	23
24	25	26	27	28	29	30
31						

CNE CUSTOMER ID MA_20227	STATEMENT NO. 0023493016	DUE DATE 05/01/2015
CNE ACCOUNT ID 1-7EC-2822	STATEMENT DATE 04/11/2015	AMOUNT DUE \$1,437.15

ACCOUNTS PAYABLE  
Plum Borough School Dist - 3061310972  
PO BOX 836  
ELLWOOD CITY, PA 16117-0836

Additional charges per the terms of your contract will be applied to the Total Amount Due if payment is not received on or before the due date.

000000PLUM BOROUGH SCHOOL DISTRICT000000000001-7EC-2822002349301600001437151



<b>Account number</b> 020440931 - <i>my</i>	<b>Telephone number</b> 724-327-7424	<b>Invoice date</b> April 10, 2015
--	---	---------------------------------------

Please call Windstream Communications toll free or visit our website.  
 For Sales/Billing/Account Changes: 1-800-843-9214  
 For Repair/Technical Support: 1-866-990-3282  
 Website: [www.windstream.com](http://www.windstream.com)

ADLAI STEVENSON ELEMENTARY SCHOOL  
 PLUM BOROUGH SCHOOL DISTRICT  
 PO BOX 980  
 ELLWOOD CITY PA 16117-0980

SCANNED

APR 17 2015

ERIC RYAN CORP.

**Service At-A-Glance**

Previous Bill	\$158.81
Payments/Adjustments thru 04/08	\$158.72 CR
Amount Previously Due - DUE IMMEDIATELY	\$ .09
Current Charges Due - 04/30/15	\$78.26
<b>Total Amount Due</b>	<b>\$78.35</b>

APR 22 2015

Introducing  
**NEW**  
**Business Bundles**

---

**Find out more Today!**

**Call**  
**877.316.4082**

**or Visit**  
[windstreambusiness.com/bundles](http://windstreambusiness.com/bundles)

Use of the Services constitutes your agreement to Windstream's Terms and Conditions maintained at [www.windstream.com/terms](http://www.windstream.com/terms), or you may request a copy by calling the number at the top of the bill. See "Windstream Customer Message" section on this bill for any recent changes to Windstream's Terms and Conditions. If you are a business customer with an existing contract, those contract terms will control.

RECEIVED  
 APR 17 2015

1193  
 4-23-15

Windstream provides online billing at [www.windstreamonline.com](http://www.windstreamonline.com)  
 Your PIN is 105478571.

**PROTECT YOUR ACCOUNT TODAY!** Windstream's Customer Account Protection Plan (CAPP) protects you from unauthorized changes or access to your account by requiring a passcode. You may establish your passcode online at [www.windstream.com/CAPP](http://www.windstream.com/CAPP) or call 877-740-6853 to speak with a representative.

**Pay My Bill**

**On-line:** For easy payments 24 hours a day, visit [www.windstreamonline.com](http://www.windstreamonline.com).  
**In person:** To find a retail store location near you, visit [www.windstream.com/support](http://www.windstream.com/support).  
**By Mail:** Send your check and payment slip to the address below.  
**By Phone:** For automated payments or to speak to a representative, call 1-800-537-7755.

If you have multiple telephone numbers, further information concerning long distance carrier assignments for those additional lines are on record with our local business office.

**REGULATORY PRESENTATION OF CURRENT CHARGES**

The following summary presents your current charges by service type as defined by your state regulatory agency. Totals for each service type include applicable surcharges, fees and taxes.

BASIC LOCAL SERVICE	78.26
<b>TOTAL</b>	<b>78.26</b>

AL



RECEIVED  
APR 20 2015



<b>Account number</b> 020181291 <i>my</i>	<b>Telephone number</b> 724-733-1500	<b>Invoice date</b> April 10, 2015
--	---	---------------------------------------

Please call Windstream Communications toll free or visit our website.  
 For Sales/Billing/Account Changes: 1-800-843-9214  
 For Repair/Technical Support: 1-866-990-3282  
 Website: [www.windstream.com](http://www.windstream.com)

ADLAI STEVENSON  
 PLUM BORO SCHOOL  
 PO BOX 980  
 ELLWOOD CITY PA 16117-0980

RECEIVED  
APR 17 2015

BY: .....

Service At-A-Glance

Previous Bill	\$266.53
Payments/Adjustments thru 04/08	\$266.53 CR
Amount Previously Due	\$700
Current Charges Due - 04/30/15	\$131.39
<b>Total Amount Due</b>	<b>\$131.39</b>

Use of the Services constitutes your agreement to Windstream's Terms and Conditions maintained at [www.windstream.com/terms](http://www.windstream.com/terms), or you may request a copy by calling the number at the top of the bill. See "Windstream Customer Message" section on this bill for any recent changes to Windstream's Terms and Conditions. If you are a business customer with an existing contract, those contract terms will control.

13502

131.39

SCANNED

MKW 4-23-15  
1193  
4-23-15

APR 17 2015

Pay My Bill ERIC RYAN CORP.

**On-line:** For easy payments 24 hours a day, visit [www.windstreamonline.com](http://www.windstreamonline.com).  
**In person:** To find a retail store location near you, visit [www.windstream.com/support](http://www.windstream.com/support).  
**By Mail:** Send your check and payment slip to the address below.  
**By Phone:** For automated payments or to speak to a representative, call 1-800-537-7755.

BRE

Introducing  
**NEW**  
**Business Bundles**

---

**Find out more Today!**

**Call**  
**877.316.4082**

**or Visit**  
[windstreambusiness.com/bundles](http://windstreambusiness.com/bundles)

AMOUNT	
DISCOUNT	
TAXES	
TOTAL	

Windstream provides online billing at [www.windstreamonline.com](http://www.windstreamonline.com)  
 Your PIN is 105479193.

**PROTECT YOUR ACCOUNT TODAY!** Windstream's Customer Account Protection Plan (CAPP) protects you from unauthorized changes or access to your account by requiring a passcode. You may establish your passcode online at [www.windstream.com/CAPP](http://www.windstream.com/CAPP) or call 877-740-6853 to speak with a representative.

distance carrier assignments for those additional lines are on record with your local business office.

REGULATORY PRESENTATION OF CURRENT CHARGES

The following summary presents your current charges by service type as defined by your state regulatory agency. Totals for each service type include applicable surcharges, fees and taxes.

BASIC LOCAL SERVICE	114.24	
NON-BASIC SERVICE	17.15	
<b>TOTAL</b>		<b>131.39</b>



RECEIVED  
APR 29 2015

Account Number 8993 20 405 0237767  
Billing Date 04/19/15  
Total Amount Due \$172.53  
Payment Due By 05/14/15  
Page 1 of 4

Contact us: @ www.business.comcast.com 1-800-391-3000

**Plum Borough School Distr**

For service at:  
100 SCHOOL RD  
PITTSBURGH PA 15239-1455

ERIC KYM CORP  
APR 28 2015  
SCANNED

**News from Comcast**

Go paperless with Ecobill, sign up to view and pay your Comcast Business bill online at: [business.comcast.com/myaccount](http://business.comcast.com/myaccount)

RECEIVED

BY:.....

**Monthly Statement Summary**

Previous Balance	172.37
Payment - 04/15/15 - Thank You	-172.37
New Charges - see below	172.53
<b>Total Amount Due</b>	<b>\$172.53</b>
Payment Due By	05/14/15

**New Charges Summary**

Comcast Cable Television	0.00
Comcast Digital Voice	151.70
Other Charges & Credits	15.83
Taxes, Surcharges & Fees	5.00
<b>Total New Charges</b>	<b>\$172.53</b>

Thank you for being a valued Comcast customer!

Detach and enclose this coupon with your payment. Please write your account number on your check or money order. Do not send cash.



If undeliverable, please return to:

PO BOX 719 TOLEDO OH 43697-0719

8633 0160 NO RP 19 04202015 NNNNNYNN 01 000257 0001

PLUM BOROUGH SCHOOL DISTR  
PO BOX 980  
ELLWOOD CITY, PA 16117-0980

Account Number	8993 20 405 0237767
Payment Due By	05/14/15
Total Amount Due	\$172.53
Amount Enclosed	\$

Make checks payable to Comcast, and remit to address below.

COMCAST  
PO BOX 3001  
SOUTHEASTERN PA 19398-3001



899320405023776700172536



RECEIVED  
 APR 29 2015  
 BY: \_\_\_\_\_

# ANDREWS & PRICE

1500 Ardmore Boulevard  
 Suite 506  
 Pittsburgh, PA 15221  
 TEL. (412) 243-9700  
 FAX (412) 243-9660

*APB*  
*4/29/15*

Plum Borough School District  
 Dr. Timothy Glasspool  
 900 Elicker Rd.  
 Plum, PA 15239

Billing Date: March 31, 2015  
 Client No.: 59000

59000.0		
59000.1		
59000.2		
59000.3		
59000.39		
59000.50		
59000.53		
59000.56		
59000.57	Adlai Stevenson	50.00
59000.59		
59000.65		
59000.73		
59000.75		
59000.76	Bus Garage	830.00
59000.78	Regency Park	320.00
59000.79		
59000.80		
59000.81		
59008.3		
59008.43		
59009.8		
59009.9		
59010.3		
59011.2		
59011.3		

Balance Due:

AMOUNT	
APPROVAL	

# New Holiday Park Elementary

(Series A of 2012)

---

**Customer Name and Service Address:**

PLUM BOROUGH SCHOOL DISTRICT  
313 HOLIDAY PARK DR TEMP  
PITTSBURGH, PA 15239-2364

BILL ID: 428860819485

Account Number: 4288660000

Rate: GM-Medium Commercial > 25  
Rider Code: 003

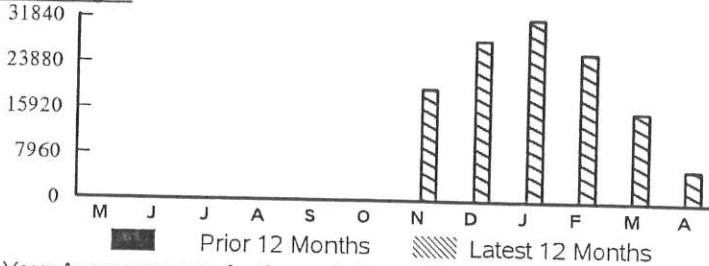
Date Prepared: 04/12/15

APR 20 2015

**Usage & Demand Information**

Next Scheduled Meter Reading Date: May 7, 2015

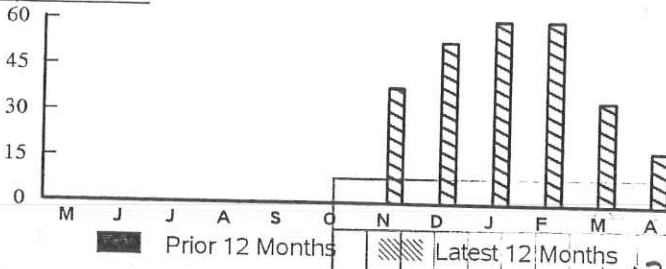
**kWh Usage:**



- Your Average usage for the past 6 months is 21233 kWh.
- Total Usage for the past 6 months is 127400 kWh.

The Price to Compare (PTC) for your rate class is 8.24 cents/kWh. It will change every June & December. Your actual PTC may differ based on your demand & usage kWh. For more information & supplier offers visit [www.oca.state.pa.us](http://www.oca.state.pa.us).

**Billing Demand:**



AMOUNT	13544
APPROVAL	1075.29

**Summary**

**Prior Billing Information**

Total Amount of Last Bill	\$1,776.26
Total Amount Owed From Your Last Bill	\$1,776.26
DLC Basic Service Charges	\$675.29
<b>TOTAL ACCOUNT BALANCE PAYABLE TO DLC</b>	<b>\$2,451.55</b>

**ACTUAL METER READING BILL**

\* See pages 3 and 4 for a complete breakdown of charges.

For more information see [www.duquesnelight.com](http://www.duquesnelight.com).

Give to Dollar Energy Fund to help people without heat or light. Make a monthly pledge at [www.duquesnelight.com](http://www.duquesnelight.com) or send a check to Duquesne Light Hardship Fund Donations, 411 Seventh Avenue MD 15-1, Pittsburgh, PA 15219. Your gift is tax deductible.

SCANNED

APR 16 2015

ERIC RYAN CORP.

Estimated PA State Taxes	Late Charge After May 13, 2015	Payment Due	Amount Due
\$45.92	1.25%	May 13, 2015	\$2,451.55

Please return this portion with your payment. Please enclose check facing forward. Make payment payable to Duquesne Light Company.

Account Number  
4288660000

PLEASE PAY THIS AMOUNT BY **MAY 13, 2015**  
\$2,451.55

PLUM SCHOOL DISTRICT  
C/O ERIC RYAN CORP  
PO BOX 473  
ELLWOOD CITY, PA 16117-0473

DUQUESNE LIGHT COMPANY  
PAYMENT PROCESSING CENTER  
PO BOX 10  
PITTSBURGH, PA 15230-0010





**Customer Name and Service Address:**  
 PLUM BOROUGH SCHOOL DISTRICT  
 313 HOLIDAY PARK DR  
 PITTSBURGH, PA 15239  
**BILL ID: 470863650597**

**Account Number: 4708670000**  
 Rate: GM-Medium Commercial > 25  
 Rider Code: 003  
 Date Prepared: 04/23/15

Usage & Demand Information		Summary	
Next Scheduled Meter Reading Date: May 7, 2015		<b>Prior Billing Information</b>	
<b>kWh Usage:</b> <p>           • Your Average usage for the past 4 months is 10150 kWh.            • Total Usage for the past 4 months is 40600 kWh.         </p> <p>The Price to Compare (PTC) for your rate class is 8.24 cents/kWh. It will change every June &amp; December. Your actual PTC may differ based on your demand &amp; usage kWh. For more information &amp; supplier offers visit <a href="http://www.oca.state.pa.us">www.oca.state.pa.us</a>.</p>		Total Amount of Last Bill \$1,937.36 Total Payment(s) Received as of 04/15/15 <u>-\$1,937.36</u> Total Amount Owed From Your Last Bill \$0.00 DLC Basic Service Charges \$1,907.58 <b>TOTAL ACCOUNT BALANCE PAYABLE TO DLC \$1,907.58</b>	
<b>Billing Demand:</b> 		<b>ACTUAL METER READING BILL</b>	
		* See pages 3 and 4 for a complete breakdown of charges. For more information see <a href="http://www.duquesnelight.com">www.duquesnelight.com</a> . Give to Dollar Energy Fund to help people without heat or light. Make a monthly pledge at <a href="http://www.duquesnelight.com">www.duquesnelight.com</a> or send a check to Duquesne Light Hardship Fund Donations, 411 Seventh Avenue MD 15-1, Pittsburgh, PA 15219. Your gift is tax deductible.	
		<b>SCANNED</b> <b>ERIC RYAN CORP</b>  <b>APR 28 2015</b>	
<b>Estimated PA State Taxes</b>	<b>Late Charge After May 26, 2015</b>	<b>Payment Due</b>	<b>Amount Due</b>
\$246.03	1.25%	May 26, 2015	\$1,907.58

Please return this portion with your payment. Please enclose check facing forward.  
 Make payment payable to Duquesne Light Company.

Account Number  
4708670000

**PLEASE PAY THIS AMOUNT BY MAY 26, 2015**  
**\$1,907.58**

PLUM SCHOOL DISTRICT  
 C/O ERIC RYAN CORP  
 PO BOX 473  
 ELLWOOD CITY, PA 16117-0473

DUQUESNE LIGHT COMPANY  
 PAYMENT PROCESSING CENTER  
 PO BOX 10  
 PITTSBURGH, PA 15230-0010



PA Commercial (GSL)  
 Plum Boro School Dist  
 Business Office  
 % UTLTY CST CUTTER  
 PO Box 836  
 Ellwood City PA 16117-0836

For Service at:  
 313 Holiday Park Dr  
 Adlai Stevenson Elementary

PO Box 6766  
 Pittsburgh, PA 15212  
[www.equitablegas.com](http://www.equitablegas.com)



Account # 001206846000018

Customer # 1206846  
 Location # 226067

For Emergencies or Customer Service:  
 (800) 654-6335

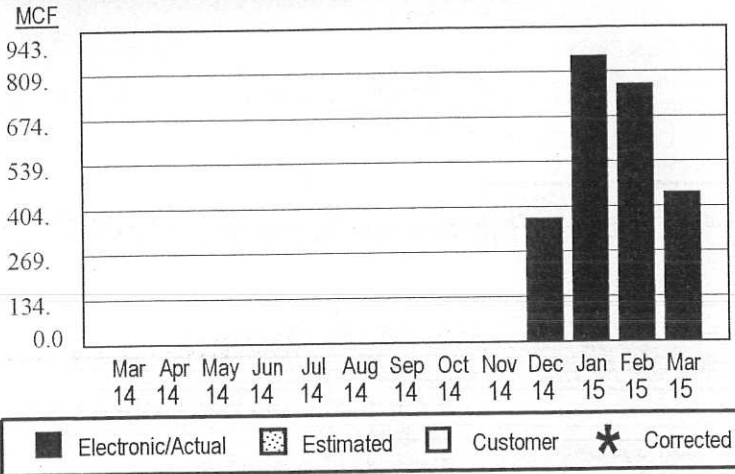
Bill # 40000874  
 Bill Date 04/06/15

**Current Gas Usage**

Meter: 1849068  
 This Reading 03/30/15 Electronic/Actual 2448.0  
 Last Reading 02/26/15 Electronic/Actual - 2002.0  
 Total Usage in 32 days 446.0

Next actual meter reading on 04/29/15 or 04/30/15

**Gas Usage History**



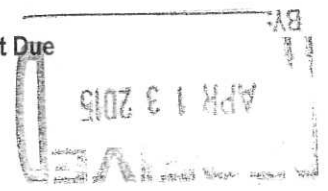
**Peoples Natural Gas Billing**

Balance On Last Bill \$13,966.18

Payments and Other Credits  
 Payment (03/09/15) (\$7,276.42)  
 Payment (03/27/15) (\$6,689.86)  
 Total Payments and Other Credits (\$13,966.28)

Current Billing and Other Basic Charges  
 Customer Charge \$150.00  
 Usage 446.0 MCF @ \$8.236/MCF \$3,673.26  
 DSIC Surcharge \$38.71  
 State Tax Adjustment Surcharge (\$12.04)  
 Current Bill \$3,849.93

Amount Due \$3,849.83



SCANNED  
 APR 10 2015  
 ERIC RYAN CORP.

**Usage (MCF) & Temperature Information**

Comparing Your Usage		Average Usage		Average Daily Temp	
Mar-14	Mar-15	Monthly	Annual	2014	2015
0.0	446.0	612.0	2,448.0	37°	38°

**Bill Message**

- ◆ The current price to compare is \$4.395.
- ◆ Capacity Charge - A charge to recover the costs to reserve capacity on the interstate pipelines.
- ◆ Thank you for your payment. Peoples Natural Gas is pleased to serve you.

00 3220      mack

ACCOUNT											
										14820	
AMOUNT	3,849.93										
APPROVAL	mack 4-13-15										

\*\*\* Important information on the back of this bill \*\*\*  
 PLEASE RETURN LOWER PORTION WITH PAYMENT

**Due Date** 04/21/15      **Amount Due** \$3,849.83

To(OWNER): Plum Borough School District  
 313 Holiday Park Dr.  
 Plum Borough, PA 15239

Project: New Holiday Park Elementary Sc  
 313 Holiday Park Drive  
 Plum Borough, PA 15239

Application No: 18  
 Invoice No: 1139  
 Period To: 4/29/2015

From: Hudson Construction, Inc.  
 1625 Dutch Lane  
 Hermitage, PA 16148

Via(Architect):

Architect's  
 Project No:  
 Invoice Date: 4/29/2015  
 Contract Date:

CHANGE ORDER SUMMARY	ADDITIONS	DEDUCTIONS
Approved previous months	153,945.36	0.00
Approved this month	0.00	0.00
TOTALS	153,945.36	0.00
Net change by change orders	153,945.36	

1. ORIGINAL CONTRACT SUM.....	\$	10,348,000.00
2. Net change by Change Orders.....	\$	153,945.36
3. CONTRACT SUM TO DATE(Line 1 +/- 2).....	\$	10,501,945.36
4. TOTAL COMPLETED & STORED TO DATE.....	\$	9,477,269.83
5. RETAINAGE.....	\$	479,404.03
6. TOTAL EARNED LESS RETAINAGE.....	\$	8,997,865.80
(Line 4 less Line 5)		
7. LESS PREVIOUS CERTIFICATES FOR PAYMENT.....	\$	8,727,838.81
(Line 6 from prior Certificate)		
8. SALES TAX.....	\$	0.00
9. CURRENT PAYMENT DUE.....	\$	270,026.99
10. BALANCE TO FINISH, PLUS RETAINAGE.....	\$	1,504,079.56
(Line 3 less Line 6)		

ITEM NO.	DESCRIPTION OF WORK	SCHEDULED VALUE	WORK COMPLETED		MATERIALS PRESENTLY STORED (Not in D or E)	TOTAL COMPLETED AND STORED TO DATE (D+E+F)	% G/C	BALANCE TO FINISH (C-G)	RETAINAGE
			FROM PREV. APPLICATION (D+E)	THIS PERIOD					
01	BOND	110,000.00	110,000.00	0.00	0.00	110,000.00	100	0.00	5,500.00
02	MOBILIZATION	15,000.00	15,000.00	0.00	0.00	15,000.00	100	0.00	750.00
03	GENERAL CONDITIONS	190,000.00	163,400.00	9,500.00	0.00	172,900.00	91	17,100.00	8,645.00
04	SITE MOBILIZATION & LAYOUT	81,750.00	81,750.00	0.00	0.00	81,750.00	100	0.00	4,087.50
05	CLEAR & GRUB	10,900.00	10,900.00	0.00	0.00	10,900.00	100	0.00	545.00
06	EROSION CONTROL	21,800.00	21,800.00	0.00	0.00	21,800.00	100	0.00	1,090.00
07	SITE DEMOLITION	163,500.00	163,500.00	0.00	0.00	163,500.00	100	0.00	8,175.00
08	BULK EXCAVATION AND FILL	499,350.00	499,350.00	0.00	0.00	499,350.00	100	0.00	24,967.50
09	EXCAVATION SUPPORT	105,000.00	105,000.00	0.00	0.00	105,000.00	100	0.00	5,250.00
10	EXCAVATE KEYWAYS	93,500.00	93,500.00	0.00	0.00	93,500.00	100	0.00	4,675.00
12	STORM SEWERS	272,500.00	272,500.00	0.00	0.00	272,500.00	100	0.00	13,625.00
14	SANITARY SEWERS	65,400.00	65,400.00	0.00	0.00	65,400.00	100	0.00	3,270.00
15	DOMESTIC WATER LINE	65,400.00	65,400.00	0.00	0.00	65,400.00	100	0.00	3,270.00
16	GAS LINE	10,900.00	10,900.00	0.00	0.00	10,900.00	100	0.00	545.00
17	FOUNDATION EXCAVATION AND BACKFILL	102,000.00	102,000.00	0.00	0.00	102,000.00	100	0.00	5,100.00
19	SIDEWALKS	74,751.00	0.00	14,950.20	0.00	14,950.20	20	59,800.80	747.51
20	CONCRETE CURBS	97,131.00	38,852.40	0.00	0.00	38,852.40	40	58,278.60	1,942.62
21	CONCRETE WALL	6,318.00	6,318.00	0.00	0.00	6,318.00	100	0.00	315.90
22	DUMPSTER PAD	2,600.00	0.00	0.00	0.00	0.00	0	2,600.00	0.00
23	MEMORIAL PAD	3,600.00	0.00	0.00	0.00	0.00	0	3,600.00	0.00
24	EQUIPMENT PAD	1,600.00	0.00	0.00	0.00	0.00	0	1,600.00	0.00
25	ASPHALT PAVING OFF SITE	35,201.00	0.00	0.00	0.00	0.00	0	35,201.00	0.00
26	ASPHALT PAVING	367,588.00	95,572.88	0.00	0.00	95,572.88	26	272,015.12	4,778.64
27	WALKWAY PAVING	13,211.00	0.00	0.00	0.00	0.00	0	13,211.00	0.00
28	CHAINLINK FENCE	13,104.00	0.00	0.00	0.00	0.00	0	13,104.00	0.00
29	RAIN GARDEN SOIL	25,000.00	0.00	0.00	0.00	0.00	0	25,000.00	0.00
30	PLANTS	65,000.00	0.00	0.00	0.00	0.00	0	65,000.00	0.00
31	RETAINING WALLS	12,000.00	0.00	0.00	0.00	0.00	0	12,000.00	0.00
32	SEEDING	18,375.00	0.00	0.00	0.00	0.00	0	18,375.00	0.00
33	CONCRETE REBAR	71,000.00	71,000.00	0.00	0.00	71,000.00	100	0.00	3,550.00
34	CONCRETE SPREAD FOOTER	89,000.00	89,000.00	0.00	0.00	89,000.00	100	0.00	4,450.00
35	CONCRETE FOOTERS	40,000.00	40,000.00	0.00	0.00	40,000.00	100	0.00	2,000.00
36	CONCRETE PIERS	45,000.00	45,000.00	0.00	0.00	45,000.00	100	0.00	2,250.00
37	ELEVATOR PIT FOUNDATIONS	6,600.00	6,600.00	0.00	0.00	6,600.00	100	0.00	330.00
38	SLAB ON GRADE	241,000.00	241,000.00	0.00	0.00	241,000.00	100	0.00	12,050.00
39	SLAB ON DECK	97,000.00	97,000.00	0.00	0.00	97,000.00	100	0.00	4,850.00
40	SLAB ON ROOF	18,300.00	18,300.00	0.00	0.00	18,300.00	100	0.00	915.00
41	STAIR PANS AND LANDINGS	10,528.00	10,528.00	0.00	0.00	10,528.00	100	0.00	526.40
42	FROST PADS	6,800.00	5,780.00	1,020.00	0.00	6,800.00	100	0.00	340.00
43	GFRC	12,000.00	9,000.00	0.00	0.00	9,000.00	75	3,000.00	450.00
44	MASONRY REBAR	30,000.00	30,000.00	0.00	0.00	30,000.00	100	0.00	1,500.00

ITEM NO.	DESCRIPTION OF WORK	SCHEDULED VALUE	WORK COMPLETED		MATERIALS PRESENTLY STORED (Not in D or E)	TOTAL COMPLETED AND STORED TO DATE (D+E+F)	% G/C	BALANCE TO FINISH (C-G)	RETAINAGE
			FROM PREV. APPLICATION (D+E)	THIS PERIOD					
46	FOUNDATION CMU AREA A	58,850.00	58,850.00	0.00	0.00	58,850.00	100	0.00	2,942.50
47	FOUNDATION CMU AREA B	43,870.00	43,870.00	0.00	0.00	43,870.00	100	0.00	2,193.50
48	FOUNDATION CMU AREA C	41,730.00	41,730.00	0.00	0.00	41,730.00	100	0.00	2,086.50
49	FOUNDATION CMU AREA D	53,500.00	53,500.00	0.00	0.00	53,500.00	100	0.00	2,675.00
50	INTERIOR MASONRY AREA A	310,300.00	310,300.00	0.00	0.00	310,300.00	100	0.00	15,515.00
51	INTERIOR MASONRY AREA B	139,600.00	139,600.00	0.00	0.00	139,600.00	100	0.00	6,980.00
52	INTERIOR MASONRY AREA C	246,100.00	246,100.00	0.00	0.00	246,100.00	100	0.00	12,305.00
153	INTERIOR MASONRY AREA D	123,050.00	123,050.00	0.00	0.00	123,050.00	100	0.00	6,152.50
154	EXTERIOR MASONRY AND VENEER AREA A	162,640.00	162,640.00	0.00	0.00	162,640.00	100	0.00	8,132.00
155	EXTERIOR MASONRY AND VENEER AREA B	223,630.00	223,630.00	0.00	0.00	223,630.00	100	0.00	11,181.50
156	EXTERIOR MASONRY AND VENEER AREA C	142,310.00	142,310.00	0.00	0.00	142,310.00	100	0.00	7,115.50
157	EXTERIOR MASONRY AND VENEER AREA D	222,560.00	222,560.00	0.00	0.00	222,560.00	100	0.00	11,128.00
158	MASONRY ACCESSORIES AREA A	14,124.00	14,124.00	0.00	0.00	14,124.00	100	0.00	706.20
159	MASONRY ACCESSORIES AREA B	12,626.00	12,626.00	0.00	0.00	12,626.00	100	0.00	631.30
160	MASONRY ACCESSORIES AREA C	12,340.00	12,340.00	0.00	0.00	12,340.00	100	0.00	617.00
161	MASONRY ACCESSORIES AREA D	11,770.00	11,770.00	0.00	0.00	11,770.00	100	0.00	588.50
53	DETAILING/ENGINEERING	54,186.00	54,186.00	0.00	0.00	54,186.00	100	0.00	2,709.30
54	STRUCTURAL AREA A	156,658.00	156,658.00	0.00	0.00	156,658.00	100	0.00	7,832.90
55	STRUCTURAL AREA B	202,260.00	202,260.00	0.00	0.00	202,260.00	100	0.00	10,113.00
169	STRUCTURAL AREA C	214,557.00	214,557.00	0.00	0.00	214,557.00	100	0.00	10,727.85
170	STRUCTURAL AREA D	173,380.00	173,380.00	0.00	0.00	173,380.00	100	0.00	8,669.00
171	J&D AREA A	41,847.00	41,847.00	0.00	0.00	41,847.00	100	0.00	2,092.35
172	J&D AREA B	59,015.00	59,015.00	0.00	0.00	59,015.00	100	0.00	2,950.75
173	J&D AREA C	63,307.00	63,307.00	0.00	0.00	63,307.00	100	0.00	3,165.35
174	J&D AREA D	50,431.00	50,431.00	0.00	0.00	50,431.00	100	0.00	2,521.55
56	METAL STAIRS A	3,058.00	3,058.00	0.00	0.00	3,058.00	100	0.00	152.90
175	METAL STAIRS B	3,058.00	3,058.00	0.00	0.00	3,058.00	100	0.00	152.90
176	METAL STAIRS C	3,058.00	3,058.00	0.00	0.00	3,058.00	100	0.00	152.90
177	METAL STAIRS D	3,058.00	3,058.00	0.00	0.00	3,058.00	100	0.00	152.90
57	RAILINGS A	2,038.00	2,038.00	0.00	0.00	2,038.00	100	0.00	101.90
58	RAILINGS B	2,038.00	2,038.00	0.00	0.00	2,038.00	100	0.00	101.90
59	RAILINGS C	2,038.00	2,038.00	0.00	0.00	2,038.00	100	0.00	101.90
162	RAILINGS D	2,038.00	2,038.00	0.00	0.00	2,038.00	100	0.00	101.90
163	MISC METAL A	1,019.00	1,019.00	0.00	0.00	1,019.00	100	0.00	50.95
164	MISC METAL C	1,019.00	1,019.00	0.00	0.00	1,019.00	100	0.00	50.95
165	ERECTION AREA A	102,868.00	102,868.00	0.00	0.00	102,868.00	100	0.00	5,143.40
166	ERECTION AREA B	130,219.00	130,219.00	0.00	0.00	130,219.00	100	0.00	6,510.95
167	ERECTION AREA C	138,953.00	138,953.00	0.00	0.00	138,953.00	100	0.00	6,947.65
168	ERECTION AREA D	112,787.00	112,787.00	0.00	0.00	112,787.00	100	0.00	5,639.35
60	WOOD BLOCKING	57,000.00	57,000.00	0.00	0.00	57,000.00	100	0.00	2,850.00
61	RECEPTION DESK STATION WALL	6,725.00	0.00	6,725.00	0.00	6,725.00	100	0.00	336.25
62	WOOD TRIM AT GUARDRAIL	2,565.00	0.00	2,565.00	0.00	2,565.00	100	0.00	128.25
63	WOOD BENCH	3,402.00	0.00	3,402.00	0.00	3,402.00	100	0.00	170.10
64	CLOSET ROD AND SHELF	875.00	0.00	875.00	0.00	875.00	100	0.00	43.75
65	SOLID SURFACE WINDOW SILLS	18,535.00	18,535.00	0.00	0.00	18,535.00	100	0.00	926.75
66	SOLID SURFACE COUNTERTOPS	4,102.00	4,102.00	0.00	0.00	4,102.00	100	0.00	205.10
67	DAMPROOF BELOW GRADE CMU	9,175.00	9,175.00	0.00	0.00	9,175.00	100	0.00	458.75
68	FOUNDATION INSULATION	10,195.00	10,195.00	0.00	0.00	10,195.00	100	0.00	509.75
69	METAL WALL PANELS	286,000.00	274,560.00	11,440.00	0.00	286,000.00	100	0.00	14,300.00
70	3 PLY BUR ROOF	676,000.00	676,000.00	0.00	0.00	676,000.00	100	0.00	33,800.00
75	METAL FASCIA AND COPING	45,000.00	44,550.00	450.00	0.00	45,000.00	100	0.00	2,250.00
76	CAULK EXTERIOR MASONRY	32,000.00	0.00	0.00	0.00	0.00	0	32,000.00	0.00
79	HM FRAMES	27,274.00	27,274.00	0.00	0.00	27,274.00	100	0.00	1,363.70
80	HM DOORS	2,189.00	0.00	0.00	0.00	0.00	0	2,189.00	0.00
81	WOOD DOORS	36,169.00	0.00	0.00	0.00	0.00	0	36,169.00	0.00
82	FRP DOORS	15,540.00	11,655.00	3,885.00	0.00	15,540.00	100	0.00	777.00
83	DOOR HARDWARE	133,368.00	0.00	0.00	92,214.25	92,214.25	69	41,153.75	9,221.43
85	OVERHEAD COILING GRILLES	8,100.00	0.00	0.00	0.00	0.00	0	8,100.00	0.00
86	ALUMINUM ENTRANCES	84,360.00	76,767.60	3,374.40	0.00	80,142.00	95	4,218.00	4,007.10
87	TRANSLUCENT PANELS	17,760.00	17,760.00	0.00	0.00	17,760.00	100	0.00	888.00
88	ALUMINUM WINDOWS	342,990.00	342,990.00	0.00	0.00	342,990.00	100	0.00	17,149.50
89	GLAZING	18,350.00	0.00	0.00	0.00	0.00	0	18,350.00	0.00
90	LOUVERS	9,400.00	9,400.00	0.00	0.00	9,400.00	100	0.00	470.00
91	DRYWALL SUBMITTALS	9,265.00	9,265.00	0.00	0.00	9,265.00	100	0.00	463.25

A ITEM NO.	B DESCRIPTION OF WORK	C SCHEDULED VALUE	D WORK COMPLETED		F MATERIALS PRESENTLY STORED (Not in D or E)	G TOTAL COMPLETED AND STORED TO DATE (D+E+F)	H % G/C	I BALANCE TO FINISH (C-G)	J RETAINAGE
			FROM PREV. APPLICATION (D+E)	THIS PERIOD					
			92	METAL STUDS					
93	DRYWALL	106,820.00	106,820.00	0.00	0.00	106,820.00	100	0.00	5,341.00
99	GFRG COLUMNS	27,250.00	20,437.50	6,812.50	0.00	27,250.00	100	0.00	1,362.50
101	EXTERIOR SOFFIT FINISH	31,610.00	0.00	14,224.50	0.00	14,224.50	45	17,385.50	711.23
102	ACOUSTICAL CEILINGS	170,040.00	146,234.40	22,105.20	0.00	168,339.60	99	1,700.40	8,416.98
103	ACOUSTIC WALL PANELS	15,455.00	12,209.45	3,245.55	0.00	15,455.00	100	0.00	772.75
104	CERAMIC AREA A	19,000.00	19,000.00	0.00	0.00	19,000.00	100	0.00	950.00
105	CERAMIC AREA A	6,800.00	6,800.00	0.00	0.00	6,800.00	100	0.00	340.00
106	CERAMIC AREA C	26,200.00	26,200.00	0.00	0.00	26,200.00	100	0.00	1,310.00
107	WOOD GYM FLOORS	54,600.00	0.00	54,600.00	0.00	54,600.00	100	0.00	2,730.00
110	VCT	130,000.00	91,000.00	13,000.00	15,348.64	119,348.64	92	10,651.36	6,734.86
111	CARPET TILE	0.00	0.00	0.00	0.00	0.00	**	0.00	0.00
112	RUBBER BASE	0.00	0.00	0.00	0.00	0.00	**	0.00	0.00
113	STAIR TREADS AND LANDINGS	0.00	0.00	0.00	0.00	0.00	**	0.00	0.00
114	EPOXY TERRAZZO FLOORING AREA A	105,839.00	76,204.08	8,467.12	0.00	84,671.20	80	21,167.80	4,233.56
178	EPOXY TERRAZZO FLOORING AREA B	61,700.00	44,424.00	4,936.00	0.00	49,360.00	80	12,340.00	2,468.00
179	EPOXY TERRAZZO FLOORING AREA C	6,900.00	5,106.00	414.00	0.00	5,520.00	80	1,380.00	276.00
180	EPOXY TERRAZZO FLOORING AREA D	63,561.00	45,128.31	5,720.49	0.00	50,848.80	80	12,712.20	2,542.44
181	RESINOUR FLOORING	27,000.00	27,000.00	0.00	0.00	27,000.00	100	0.00	1,350.00
182	PAINTING	95,000.00	90,250.00	0.00	0.00	90,250.00	95	4,750.00	4,512.50
117	MARKERBOARDS	67,000.00	34,840.00	32,160.00	0.00	67,000.00	100	0.00	3,350.00
118	TACKBOARDS	0.00	0.00	0.00	0.00	0.00	**	0.00	0.00
119	VISUAL DISPLAY WALL PANELS	0.00	0.00	0.00	0.00	0.00	**	0.00	0.00
120	VISUAL DISPLAY RAILS	0.00	0.00	0.00	0.00	0.00	**	0.00	0.00
121	CONFERENCE UNITS	0.00	0.00	0.00	0.00	0.00	**	0.00	0.00
122	DISPLAY CASES	0.00	0.00	0.00	0.00	0.00	**	0.00	0.00
123	INTERIOR SIGNS	7,200.00	0.00	0.00	0.00	0.00	0	7,200.00	0.00
124	VINYL NUMBERS	150.00	0.00	0.00	0.00	0.00	0	150.00	0.00
125	PLAQUE	1,250.00	0.00	0.00	0.00	0.00	0	1,250.00	0.00
126	CAST LETTERS	6,500.00	0.00	0.00	0.00	0.00	0	6,500.00	0.00
127	TRAFFIC SIGNS	1,900.00	0.00	0.00	0.00	0.00	0	1,900.00	0.00
128	TOILET COMPARTMENTS	20,000.00	14,000.00	6,000.00	0.00	20,000.00	100	0.00	1,000.00
129	CUBICLE CURTAINS	2,800.00	0.00	0.00	0.00	0.00	0	2,800.00	0.00
130	TOILET ACCESSORIES	31,000.00	23,250.00	7,750.00	0.00	31,000.00	100	0.00	1,550.00
131	FIRE EXT	3,200.00	0.00	1,600.00	0.00	1,600.00	50	1,600.00	80.00
132	FLAGPOLE	3,500.00	2,800.00	0.00	0.00	2,800.00	80	700.00	140.00
133	FOOD SERVICE DEPARTMENT	270,000.00	129,600.00	48,600.00	0.00	178,200.00	66	91,800.00	8,910.00
140	PROJECTION SCREENS	7,900.00	0.00	0.00	0.00	0.00	0	7,900.00	0.00
141	BASKETBALL EQUIPMENT	34,800.00	34,800.00	0.00	0.00	34,800.00	100	0.00	1,740.00
142	WALL PADS	9,000.00	5,490.00	0.00	0.00	5,490.00	61	3,510.00	274.50
143	FOLD UP DIVIDER	7,200.00	7,200.00	0.00	0.00	7,200.00	100	0.00	360.00
144	VOLLEYBALL EQUIPMENT	2,000.00	2,000.00	0.00	0.00	2,000.00	100	0.00	100.00
145	SCOREBOARDS	5,800.00	5,800.00	0.00	0.00	5,800.00	100	0.00	290.00
146	ROLLER SHADES	35,661.00	0.00	0.00	0.00	0.00	0	35,661.00	0.00
147	CASEWORK	239,288.00	239,288.00	0.00	0.00	239,288.00	100	0.00	11,964.40
148	LIBRARY CASEWORK	50,600.00	50,600.00	0.00	0.00	50,600.00	100	0.00	2,530.00
149	MUSIC CASEWORK	3,180.00	3,180.00	0.00	0.00	3,180.00	100	0.00	159.00
150	ENTRANCE MATS	4,300.00	0.00	0.00	3,248.00	3,248.00	76	1,052.00	324.80
151	BLEACHERS	38,500.00	0.00	0.00	0.00	0.00	0	38,500.00	0.00
152	ELEVATORS	48,000.00	48,000.00	0.00	0.00	48,000.00	100	0.00	2,400.00
184	CO #1	8,883.03	8,883.03	0.00	0.00	8,883.03	100	0.00	444.15
185	CO#2 - Temp road to transforme	92,400.00	92,400.00	0.00	0.00	92,400.00	100	0.00	4,620.00
186	CO #4 Additional Sidewalks	45,162.89	45,162.89	0.00	0.00	45,162.89	100	0.00	2,258.14
187	CO #3 Shelving	5,258.00	5,258.00	0.00	0.00	5,258.00	100	0.00	262.90
188	CO #5	2,241.44	2,241.44	0.00	0.00	2,241.44	100	0.00	112.07
	Totals	10,501,945.36	9,078,636.98	287,821.96	110,810.89	9,477,269.83	90	1,024,675.53	479,404.03



**AIA Type Document**  
**Application and Certification for Payment**

Page 1 of 6

**TO (OWNER):** Plum Borough School District  
900 Elicker Road  
Plum, PA 15239

**PROJECT:** New Holiday Park Elem School  
900 Elicker Road  
Plum, PA 15239

**APPLICATION NO:** 16  
**PERIOD TO:** 4/30/2015

**DISTRIBUTION TO:**  
\_ OWNER  
\_ CONSTRUCTION MANAGER  
\_ ARCHITECT  
\_ CONTRACTOR

**FROM (CONTRACTOR):** Lugaila Mechanical Inc  
1 Rutgers Rd  
Pittsburgh, PA 15205

**ARCHITECT'S PROJECT NO:**

**VIA CONSTRUCTION MANAGER:**

**CONTRACT FOR:**

**VIA ARCHITECT:**

**CONTRACT DATE:**

### CONTRACTOR'S APPLICATION FOR PAYMENT

Application is made for Payment, as shown below, in connection with the Contract. Continuation Sheet, AIA Type Document is attached.

1. ORIGINAL CONTRACT SUM .....	\$	1,687,300.00
2. Net Change by Change Orders .....	\$	6,523.09
3. CONTRACT SUM TO DATE (Line 1 + 2) .....	\$	1,693,823.09
4. TOTAL COMPLETED AND STORED TO DATE .....	\$	1,667,063.09
<b>5. RETAINAGE:</b>		
a. 5.00 % of Completed Work	\$	83,353.15
b. 0.00 % of Stored Material	\$	0.00
Total retainage (Line 5a + 5b) .....	\$	83,353.15
6. TOTAL EARNED LESS RETAINAGE .....	\$	1,583,709.94
(Line 4 less Line 5 Total)		
<b>7. LESS PREVIOUS CERTIFICATES FOR PAYMENT</b>		
(Line 6 from prior Certificate) .....	\$	1,561,319.39
8. CURRENT PAYMENT DUE .....	\$	22,390.55
<b>9. BALANCE TO FINISH, INCLUDING RETAINAGE</b>		
(Line 3 less Line 6)	\$	110,113.15

CHANGE ORDER SUMMARY	ADDITIONS	DEDUCTIONS
Total changes approved in previous months by Owner	11,523.62	-5,000.53
Total approved this Month	0.00	0.00
<b>TOTALS</b>	11,523.62	-5,000.53
NET CHANGES by Change Order	6,523.09	

The Undersigned Contractor certifies that to the best of the Contractor's knowledge, information and belief the work covered by this application for Payment has been completed in accordance with the Contract Documents, that all amounts have been paid by the Contractor for Work for which previous Certificates for Payment were issued and payments received from the owner, and that current payment shown herein is now due.

**CONTRACTOR:** Lugaila Mechanical Inc  
1 Rutgers Rd  
Pittsburgh, PA 15205

By: \_\_\_\_\_ Date: \_\_\_\_\_  
Richard T. Lugaila / Vice-President

State of: PA

County of: Allegheny

Subscribed and Sworn to before me this \_\_\_\_\_ Day of \_\_\_\_\_ 20\_\_

Notary Public:

My Commission Expires : \_\_\_\_\_

### CERTIFICATE FOR PAYMENT

In Accordance with the Contract Documents, based on on-site observations and the data comprising the above application, the Construction Manager and Architect certifies to owner that to the best of their knowledge, information and belief the Work has progressed as indicated, the quality of the work is in accordance with the Contract Documents, and the Contractor is entitled to payment of the AMOUNT CERTIFIED.

**AMOUNT CERTIFIED** .....

*(Attach explanation if amount certified differs from the amount applied. Initial all figures on this Application and on the Continuation Sheet that are changed to conform to the amount certified.)*

**CONSTRUCTION MANAGER:**

By: \_\_\_\_\_ Date: \_\_\_\_\_

**ARCHITECT:**

By: \_\_\_\_\_ Date: \_\_\_\_\_

This Certificate is not negotiable. The AMOUNT CERTIFIED is payable only to the Contractor named herein. Issuance, Payment and acceptance of payment are without prejudice to any rights of the Owner or Contractor under this Contract.

**AIA Type Document**  
**Application and Certification for Payment**

Page 2 of 6

**TO (OWNER):** Plum Borough School District  
900 Elicker Road  
Plum, PA 15239

**PROJECT:** New Holiday Park Elem School  
900 Elicker Road  
Plum, PA 15239

**APPLICATION NO:** 16  
**PERIOD TO:** 4/30/2015

**DISTRIBUTION TO:**  
\_ OWNER  
\_ CONSTRUCTION  
\_ MANAGER  
\_ ARCHITECT  
\_ CONTRACTOR

**FROM (CONTRACTOR):** Lugaila Mechanical Inc  
1 Rutgers Rd  
Pittsburgh, PA 15205

**ARCHITECT'S PROJECT NO:**

**VIA CONSTRUCTION MANAGER:**

**CONTRACT FOR:**

**VIA ARCHITECT:**

**CONTRACT DATE:**

ITEM	DESCRIPTION	SCHEDULE VALUE	PREVIOUS APPLICATIONS	COMPLETED THIS PERIOD	STORED MATERIAL	COMPLETED STORED	%	BALANCE	RETAINAGE
1	Bonds and Insurance	23,000.00	23,000.00	0.00	0.00	23,000.00	100.00	0.00	1,150.00
2	Mobilization	13,000.00	13,000.00	0.00	0.00	13,000.00	100.00	0.00	650.00
3	General Condition	32,000.00	31,360.00	0.00	0.00	31,360.00	98.00	640.00	1,568.00
4	Submittals	20,300.00	20,300.00	0.00	0.00	20,300.00	100.00	0.00	1,015.00
5	Coordination drawings	26,500.00	26,500.00	0.00	0.00	26,500.00	100.00	0.00	1,325.00
6	Piping Hangers - MATERIAL	8,000.00	8,000.00	0.00	0.00	8,000.00	100.00	0.00	400.00
7	Piping Hangers - LABOR	54,000.00	52,920.00	1,080.00	0.00	54,000.00	100.00	0.00	2,700.00
8	Refrigeration Piping - MATERIAL	28,000.00	26,600.00	1,400.00	0.00	28,000.00	100.00	0.00	1,400.00
9	Refrigeration Piping - LABOR	14,000.00	10,500.00	1,400.00	0.00	11,900.00	85.00	2,100.00	595.00
10	Hot Water Piping - MATERIAL	53,000.00	53,000.00	0.00	0.00	53,000.00	100.00	0.00	2,650.00
11	Hot Water Piping - LABOR	65,000.00	61,750.00	3,250.00	0.00	65,000.00	100.00	0.00	3,250.00
12	Chilled water piping - MATERIAL	42,000.00	42,000.00	0.00	0.00	42,000.00	100.00	0.00	2,100.00
13	Chilled water piping - LABOR	53,000.00	53,000.00	0.00	0.00	53,000.00	100.00	0.00	2,650.00
14	Condensate Drains - MATERIAL	16,000.00	16,000.00	0.00	0.00	16,000.00	100.00	0.00	800.00
15	Condensate Drains - LABOR	20,000.00	19,600.00	0.00	0.00	19,600.00	98.00	400.00	980.00
16	CRAC Unit - MATERIAL	12,500.00	12,500.00	0.00	0.00	12,500.00	100.00	0.00	625.00
17	CRAC Unit - LABOR	2,000.00	2,000.00	0.00	0.00	2,000.00	100.00	0.00	100.00
18	Condensing Units - MATERIAL	39,000.00	39,000.00	0.00	0.00	39,000.00	100.00	0.00	1,950.00
19	Condensing Units - LABOR	6,500.00	6,500.00	0.00	0.00	6,500.00	100.00	0.00	325.00
20	UV's and Shelving - MATERIAL	230,000.00	230,000.00	0.00	0.00	230,000.00	100.00	0.00	11,500.00
21	UV's - LABOR	20,000.00	20,000.00	0.00	0.00	20,000.00	100.00	0.00	1,000.00

**AIA Type Document  
Application and Certification for Payment**

Page 3 of 6

**TO (OWNER):** Plum Borough School District  
900 Elicker Road  
Plum, PA 15239

**PROJECT:** New Holiday Park Elem School  
900 Elicker Road  
Plum, PA 15239

**APPLICATION NO:** 16  
**PERIOD TO:** 4/30/2015

**DISTRIBUTION TO:**  
\_ OWNER  
\_ CONSTRUCTION  
\_ MANAGER  
\_ ARCHITECT  
\_ CONTRACTOR

**FROM (CONTRACTOR):** Lugaila Mechanical Inc  
1 Rutgers Rd  
Pittsburgh, PA 15205

**ARCHITECT'S  
PROJECT NO:**

**VIA CONSTRUCTION MANAGER:**

**CONTRACT FOR:**

**VIA ARCHITECT:**

**CONTRACT DATE:**

ITEM	DESCRIPTION	SCHEDULE VALUE	PREVIOUS APPLICATIONS	COMPLETED THIS PERIOD	STORED MATERIAL	COMPLETED STORED	%	BALANCE	RETAINAGE
22	UV Shelving - LABOR (Sheetmetal)	28,800.00	27,360.00	0.00	0.00	27,360.00	95.00	1,440.00	1,368.00
23	Chiller - MATERIAL	59,000.00	59,000.00	0.00	0.00	59,000.00	100.00	0.00	2,950.00
24	Chiller - LABOR	3,500.00	3,500.00	0.00	0.00	3,500.00	100.00	0.00	175.00
25	Convectors - MATERIAL	2,000.00	2,000.00	0.00	0.00	2,000.00	100.00	0.00	100.00
26	Convectors - LABOR	500.00	75.00	175.00	0.00	250.00	50.00	250.00	12.50
27	Unit Heaters - MATERIAL	1,500.00	1,500.00	0.00	0.00	1,500.00	100.00	0.00	75.00
28	Unit Heaters - LABOR	800.00	800.00	0.00	0.00	800.00	100.00	0.00	40.00
29	Hot water coil - MATERIAL	4,000.00	4,000.00	0.00	0.00	4,000.00	100.00	0.00	200.00
30	Hot water coil - LABOR	1,200.00	1,200.00	0.00	0.00	1,200.00	100.00	0.00	60.00
31	Radiation Panels - MATERIAL	7,500.00	7,500.00	0.00	0.00	7,500.00	100.00	0.00	375.00
32	Radiation Panels - LABOR	2,500.00	1,875.00	125.00	0.00	2,000.00	80.00	500.00	100.00
33	Air Handling Units - MATERIAL	26,000.00	26,000.00	0.00	0.00	26,000.00	100.00	0.00	1,300.00
34	Air Handling Units - LABOR	5,000.00	5,000.00	0.00	0.00	5,000.00	100.00	0.00	250.00
35	Cabinet Unit Heaters - MATERIAL	3,000.00	3,000.00	0.00	0.00	3,000.00	100.00	0.00	150.00
36	Cabinet Unit Heaters - LABOR	1,500.00	750.00	750.00	0.00	1,500.00	100.00	0.00	75.00
37	Boilers - MATERIAL	59,000.00	59,000.00	0.00	0.00	59,000.00	100.00	0.00	2,950.00
38	Boilers - LABOR	4,500.00	4,500.00	0.00	0.00	4,500.00	100.00	0.00	225.00
39	Boiler Flue - MATERIAL	16,000.00	16,000.00	0.00	0.00	16,000.00	100.00	0.00	800.00
40	HVAC Pumps - MATERIAL	25,000.00	25,000.00	0.00	0.00	25,000.00	100.00	0.00	1,250.00
41	HVAC Pumps - LABOR	2,500.00	2,500.00	0.00	0.00	2,500.00	100.00	0.00	125.00
42	VFD's	6,500.00	6,500.00	0.00	0.00	6,500.00	100.00	0.00	325.00

**AIA Type Document**  
**Application and Certification for Payment**

Page 4 of 6

**TO (OWNER):** Plum Borough School District  
 900 Elicker Road  
 Plum, PA 15239

**PROJECT:** New Holiday Park Elem School  
 900 Elicker Road  
 Plum, PA 15239

**APPLICATION NO:** 16  
**PERIOD TO:** 4/30/2015

**DISTRIBUTION TO:**  
 \_ OWNER  
 \_ CONSTRUCTION  
 \_ MANAGER  
 \_ ARCHITECT  
 \_ CONTRACTOR

**FROM (CONTRACTOR):** Lugaila Mechanical Inc  
 1 Rutgers Rd  
 Pittsburgh, PA 15205

**ARCHITECT'S PROJECT NO:**

**VIA CONSTRUCTION MANAGER:**

**CONTRACT FOR:**

**VIA ARCHITECT:**

**CONTRACT DATE:**

ITEM	DESCRIPTION	SCHEDULE VALUE	PREVIOUS APPLICATIONS	COMPLETED THIS PERIOD	STORED MATERIAL	COMPLETED STORED	%	BALANCE	RETAINAGE
43	Expansion Tanks - MATERIAL	5,000.00	5,000.00	0.00	0.00	5,000.00	100.00	0.00	250.00
44	Expansion Tanks - LABOR	1,500.00	1,500.00	0.00	0.00	1,500.00	100.00	0.00	75.00
45	Air separator - MATERIAL	8,000.00	8,000.00	0.00	0.00	8,000.00	100.00	0.00	400.00
46	Air separator - LABOR	2,500.00	2,500.00	0.00	0.00	2,500.00	100.00	0.00	125.00
47	Piping Final Connections - MATERIAL	20,000.00	20,000.00	0.00	0.00	20,000.00	100.00	0.00	1,000.00
48	Piping Final Connections - LABOR	29,000.00	27,550.00	1,450.00	0.00	29,000.00	100.00	0.00	1,450.00
49	Mobilization (Insulation)	5,000.00	5,000.00	0.00	0.00	5,000.00	100.00	0.00	250.00
50	Hot water insulation (Insulation) MATERIAL	10,000.00	9,500.00	500.00	0.00	10,000.00	100.00	0.00	500.00
51	Hot water insulation (Insulation) LABOR	18,000.00	17,460.00	0.00	0.00	17,460.00	97.00	540.00	873.00
52	Chilled water insulation (Insulation) MATERIAL	17,000.00	16,490.00	510.00	0.00	17,000.00	100.00	0.00	850.00
53	Chilled water insulation (Insulation) LABOR	24,000.00	23,280.00	0.00	0.00	23,280.00	97.00	720.00	1,164.00
54	Fresh air ductwork insulation (Insulation) MATERIAL	4,000.00	3,920.00	0.00	0.00	3,920.00	98.00	80.00	196.00
55	Fresh air ductwork insulation (Insulation) LABOR	12,000.00	11,760.00	0.00	0.00	11,760.00	98.00	240.00	588.00
56	Concealed supply ductwork insulation (Insulation) MATERIAL	2,000.00	1,900.00	100.00	0.00	2,000.00	100.00	0.00	100.00
57	Concealed supply ductwork insulation (Insulation) LABOR	12,000.00	11,400.00	600.00	0.00	12,000.00	100.00	0.00	600.00
58	Kitchen exhaust ductwork insulation (Insulation) MATERIAL	2,000.00	1,600.00	400.00	0.00	2,000.00	100.00	0.00	100.00
59	Kitchen exhaust ductwork insulation (Insulation) LABOR	3,000.00	1,200.00	1,800.00	0.00	3,000.00	100.00	0.00	150.00

**AIA Type Document**  
**Application and Certification for Payment**

Page 5 of 6

**TO (OWNER):** Plum Borough School District  
900 Elicker Road  
Plum, PA 15239

**PROJECT:** New Holiday Park Elem School  
900 Elicker Road  
Plum, PA 15239

**APPLICATION NO:** 16  
**PERIOD TO:** 4/30/2015

**DISTRIBUTION TO:**  
\_ OWNER  
\_ CONSTRUCTION MANAGER  
\_ ARCHITECT  
\_ CONTRACTOR

**FROM (CONTRACTOR):** Lugaila Mechanical Inc  
1 Rutgers Rd  
Pittsburgh, PA 15205

**ARCHITECT'S PROJECT NO:**

**VIA CONSTRUCTION MANAGER:**

**CONTRACT FOR:**

**VIA ARCHITECT:**

**CONTRACT DATE:**

ITEM	DESCRIPTION	SCHEDULE VALUE	PREVIOUS APPLICATIONS	COMPLETED THIS PERIOD	STORED MATERIAL	COMPLETED STORED	%	BALANCE	RETAINAGE
60	Drawings Engineering & Submittals (Controls)	23,500.00	23,500.00	0.00	0.00	23,500.00	100.00	0.00	1,175.00
61	Data Base Design (Controls)	18,000.00	16,200.00	1,800.00	0.00	18,000.00	100.00	0.00	900.00
62	Control Valves & Dampers(Controls)	25,000.00	25,000.00	0.00	0.00	25,000.00	100.00	0.00	1,250.00
63	ATC for Air Handlers (Controls) -MATERIAL	8,000.00	7,840.00	160.00	0.00	8,000.00	100.00	0.00	400.00
64	ATC for Air Handlers (Controls) - LABOR	7,500.00	7,350.00	150.00	0.00	7,500.00	100.00	0.00	375.00
65	ATC for Unit Ventilators (Controls) - MATERIAL	101,000.00	98,980.00	2,020.00	0.00	101,000.00	100.00	0.00	5,050.00
66	ATC for Unit Ventilators (Controls) - LABOR	64,000.00	62,720.00	1,280.00	0.00	64,000.00	100.00	0.00	3,200.00
67	ATC for HW/CW System (Controls) - MATERIAL	20,000.00	19,600.00	400.00	0.00	20,000.00	100.00	0.00	1,000.00
68	ATC for HW/CW System (Controls) - LABOR	9,000.00	8,820.00	180.00	0.00	9,000.00	100.00	0.00	450.00
69	ATC for EF Rad Panels & Misc (Controls) - MATERIAL	8,000.00	7,840.00	160.00	0.00	8,000.00	100.00	0.00	400.00
70	ATC for EF Rad Panels & Misc (Controls) - LABOR	5,000.00	4,900.00	100.00	0.00	5,000.00	100.00	0.00	250.00
71	ATC Front End (Controls)	5,000.00	3,750.00	250.00	0.00	4,000.00	80.00	1,000.00	200.00
72	Mobilization (Sheetmetal)	3,000.00	3,000.00	0.00	0.00	3,000.00	100.00	0.00	150.00
73	Ductwork material (Sheetmetal sub)	29,000.00	29,000.00	0.00	0.00	29,000.00	100.00	0.00	1,450.00
74	Ductwork shop (Sheetmetal sub)	39,100.00	39,100.00	0.00	0.00	39,100.00	100.00	0.00	1,955.00
75	Ductwork Field (Sheetmetal sub)	48,800.00	48,800.00	0.00	0.00	48,800.00	100.00	0.00	2,440.00
76	AHU (Sheetmetal sub) - LABOR	1,750.00	1,750.00	0.00	0.00	1,750.00	100.00	0.00	87.50

**AIA Type Document  
Application and Certification for Payment**

Page 6 of 6

**TO (OWNER):** Plum Borough School District  
900 Elicker Road  
Plum, PA 15239

**PROJECT:** New Holiday Park Elem School  
900 Elicker Road  
Plum, PA 15239

**APPLICATION NO:** 16  
**PERIOD TO:** 4/30/2015

**DISTRIBUTION TO:**  
\_ OWNER  
\_ CONSTRUCTION MANAGER  
\_ ARCHITECT  
\_ CONTRACTOR

**FROM (CONTRACTOR):** Lugaila Mechanical Inc  
1 Rutgers Rd  
Pittsburgh, PA 15205

**ARCHITECT'S PROJECT NO:**

**VIA CONSTRUCTION MANAGER:**

**CONTRACT FOR:**

**VIA ARCHITECT:**

**CONTRACT DATE:**

ITEM	DESCRIPTION	SCHEDULE VALUE	PREVIOUS APPLICATIONS	COMPLETED THIS PERIOD	STORED MATERIAL	COMPLETED STORED	%	BALANCE	RETAINAGE
77	Ductwork penetration drawing for GC	3,800.00	3,800.00	0.00	0.00	3,800.00	100.00	0.00	190.00
78	Exhaust Fan/GRV (Sheetmetal sub) - MATERIAL	12,000.00	12,000.00	0.00	0.00	12,000.00	100.00	0.00	600.00
79	Exhaust Fan/GRV (Sheetmetal sub) -LABOR	3,000.00	3,000.00	0.00	0.00	3,000.00	100.00	0.00	150.00
80	Grilles and Diffuser (Sheetmetal sub) - MATERIAL	15,000.00	15,000.00	0.00	0.00	15,000.00	100.00	0.00	750.00
81	Grilles and Diffuser (Sheetmetal sub) -LABOR	1,500.00	1,275.00	75.00	0.00	1,350.00	90.00	150.00	67.50
82	Training (Sheetmetal sub) -LABOR	550.00	0.00	0.00	0.00	0.00	0.00	550.00	0.00
83	Close-out Documents (Sheetmetal sub) -LABOR AND MATERIAL	1,500.00	0.00	225.00	0.00	225.00	15.00	1,275.00	11.25
84	Start up	3,000.00	0.00	900.00	0.00	900.00	30.00	2,100.00	45.00
85	Test and Balance	13,700.00	1,096.00	2,329.00	0.00	3,425.00	25.00	10,275.00	171.25
86	Training	1,000.00	0.00	0.00	0.00	0.00	0.00	1,000.00	0.00
87	Close-out Documents	3,500.00	0.00	0.00	0.00	0.00	0.00	3,500.00	0.00
88	Change Order -H001	-5,000.53	-5,000.53	0.00	0.00	-5,000.53	100.00	0.00	-250.03
89	Change Order - H002	11,523.62	11,523.62	0.00	0.00	11,523.62	100.00	0.00	576.18
<b>REPORT TOTALS</b>		<b>\$1,693,823.09</b>	<b>\$1,643,494.09</b>	<b>\$23,569.00</b>	<b>\$0.00</b>	<b>\$1,667,063.09</b>	<b>98.42</b>	<b>\$26,760.00</b>	<b>\$83,353.15</b>



4519 Stonecroft Ct  
Murrysville, PA 15668

# Invoice

Date	Invoice #
4/30/2015	May-2015

Bill To
Plum Borough School District 900 Elicker Road Plum, PA 15239

Project
New Holiday Park

Quantity	Description	Rate	Amount
1	Owners Representative Services	14,300.00	14,300.00
<b>Total</b>			\$14,300.00

APPLICATION AND CERTIFICATE FOR PAYMENT

TO OWNER : HOLIDAY PARK SCHOOL PROJECT : HOLIDAY PARK SCHOOL APPLICATION NO: 18  
 CUST # 1582 313 HOLIDAY PARK DR

FROM CONTRACTOR : PLUM BOROUGH PA 15239 VIA ARCHITECT : PERIOD TO: 04/30/2015  
 VERN'S ELECTRIC, INC. 1917 BROWNSVILLE ROAD DISTRIBUTION TO:  
 2nd FLOOR [ ] OWNER  
 PITTSBURGH, PA. 15210 [ ] ARCHITECT  
 [ ] CONTRACTOR  
 [ ]  
 [ ]

CONTRACT FOR : HOLIDAY PARK SCHOOL JOB # 1582 CONTRACT DATE : 11/11/2013

CONTRACTOR'S APPLICATION FOR PAYMENT  
 \*\*\* CHANGE ORDERS \*\*\*  
 PLEASE SEE THE ATTACHED CHANGE ORDER SUMMARY

The undersigned Contractor certifies that to the best of the Contractor's knowledge, information and belief the Work covered by this Application for Payment has been completed in accordance with the Contract Documents, that all amounts have been paid by the Contractor for Work for which previous Certificates for Payment were issued and payments received from the Owner, and that current payment shown herein is now due.

CONTRACTOR: VERN'S ELECTRIC, INC.

By: \_\_\_\_\_ Date: \_\_\_\_\_

State of: \_\_\_\_\_ County of: \_\_\_\_\_

Subscribed and sworn to before me this \_\_\_\_\_ day of \_\_\_\_\_, \_\_\_\_\_

Notary Public:

My Commission expires: \_\_\_\_\_

Application is made for payment, as shown below, in connection with the contract. A Continuation sheet is attached.

1. ORIGINAL CONTRACT SUM .....	\$	2,179,935.00
2. NET CHANGE BY CHANGE ORDERS .....	\$	21,981.99
3. CONTRACT SUM TO DATE .....	\$	2,201,916.99
4. TOTAL COMPLETED & STORED TO DATE....	\$	1,997,146.56
5. RETAINAGE:		
a. 5.00 % of Completed Work	\$	91,972.37
b. 5.00 % of Stored Material	\$	7,885.00
TOTAL RETAINAGE .....	\$	99,857.37
6. TOTAL EARNED LESS RETAINAGE .....	\$	1,897,289.19
7. LESS PREV CERTIFICATES FOR PAYMENT....	\$	1,747,926.40
8. CURRENT PAYMENT DUE .....	\$	149,362.79
9. BALANCE TO FINISH, PLUS RETAINAGE	\$	304,627.80

ARCHITECT'S CERTIFICATE FOR PAYMENT

In accordance with the Contract Documents, based on on-site observations and the data comprising of the above application, the Architect certifies to the Owner that to the best of the Architect's knowledge, information and belief the Work has progressed as indicated, the quality of the Work is in accordance with the Contract Documents, and the Contractor is entitled to payment of the AMOUNT CERTIFIED. This Certificate is not negotiable. The AMOUNT CERTIFIED is payable only to the Contractor named herein. Issuance, payment and acceptance of payment are without prejudice to any rights of the Owner or Contractor under this Contract.

AMOUNT CERTIFIED .....

(Attach explanation if amount certified differs from the amount applied for.)

ARCHITECT:

By: \_\_\_\_\_ Date: \_\_\_\_\_



APPLICATION AND CERTIFICATE FOR PAYMENT

TO OWNER	: HOLIDAY PARK SCHOOL	PROJECT	: HOLIDAY PARK SCHOOL	APPLICATION NO:	18
CUST #	1582				
	313 HOLIDAY PARK DR				
	PLUM BOROUGH PA 15239	VIA ARCHITECT	:	PERIOD TO:	04/30/2015
FROM CONTRACTOR	: VERN'S ELECTRIC, INC.	PROJECT NO	:	DISTRIBUTION TO:	
	1917 BROWNSVILLE ROAD			[ ]	OWNER
	2nd FLOOR			[ ]	ARCHITECT
	PITTSBURGH, PA. 15210			[ ]	CONTRACTOR
				[ ]	
CONTRACT FOR	: HOLIDAY PARK SCHOOL	JOB #	1582	CONTRACT DATE	: 11/11/2013
					[ ]

C H A N G E O R D E R S U M M A R Y

Change Orders	ADDITIONS	DEDUCTIONS
approved in previous months by Owner		
TOTAL	47,087.29	25,105.30
Approved this month		
Number   Date Approved		
TOTALS	47,087.29	25,105.30
Net change by Change Orders	21,981.99	

-----CONTINUATION SHEET-----

Application Number : 18  
 Application Date : 04/30/2015  
 Period To : 04/30/2015  
 Architect's Project No. :

FOR

ITEM	SCHEDULED VALUE (c)	<---- WORK COMPLETED ----> PREVIOUS APPL (d)	THIS PERIOD (e)	STORED MATERIALS (f)	TOTAL COMPLETED & STORED TO DATE (g)	PCT	BALANCE TO FINISH (h)	RETAINAGE (i)
01. BOND & INSURANCE	25,900.00	25,900.00			25,900.00	100.00		1,295.00
02. MOBILIZATION	89,000.00	89,000.00			89,000.00	100.00		4,450.00
03. GENERAL CONDITIONS	15,600.00	15,600.00			15,600.00	100.00		780.00
04. ELECTRICAL INSPECTIO	7,100.00	7,100.00			7,100.00	100.00		355.00
05. SUBMITTALS	8,500.00	8,500.00			8,500.00	100.00		425.00
06. TEMPORARY SERVICE	10,400.00	10,400.00			10,400.00	100.00		520.00
07. ELECTRICAL SERVICE	7,400.00	7,400.00			7,400.00	100.00		370.00
08. TEMPORARY LITE & PWR	2,600.00	2,600.00			2,600.00	100.00		130.00
09. 3/4" TO 1-1/2" EMT	182,700.00	182,700.00			182,700.00	100.00		9,135.00
10. 2" TO 2-1/2" EMT	16,536.00	16,536.00			16,536.00	100.00		826.80
11. 4" EMT	10,200.00	10,200.00			10,200.00	100.00		510.00
12. 3/4" TO 2" PVC	7,920.00	7,920.00			7,920.00	100.00		396.00
13. 2-1/2" TO 4" PVC	68,100.00	68,100.00			68,100.00	100.00		3,405.00
14. 5" GRC ELBOWS	15,840.00	15,840.00			15,840.00	100.00		792.00
15. FLEX	1,190.00	1,071.00	59.50		1,130.50	95.00	59.50	56.53
16. #14 TO #10 WIRE	114,120.00	108,414.00	5,706.00		114,120.00	100.00		5,706.00
17. #8 TO #2 WIRE	26,260.00	23,634.00	1,313.00		24,947.00	95.00	1,313.00	1,247.35
PAGE TOTALS :	609,366.00 .00	600,915.00 .00	7,078.50 .00	.00 .00	607,993.50 .00		1,372.50 .00	30,399.68 .00

\*\*\* BILLING WORKSHEET, NOT INTENDED TO REPLACE AIA DOCUMENT G703 \*\*\*

-----CONTINUATION SHEET-----  
FOR

Application Number : 18  
Application Date : 04/30/2015  
Period To : 04/30/2015  
Architect's Project No. :

ITEM	SCHEDULED	<---- WORK COMPLETED ---->		STORED	TOTAL COMPLETED	PCT	BALANCE	RETAINAGE
	VALUE	PREVIOUS APPL	THIS PERIOD	MATERIALS	& STORED TO DATE		TO FINISH	
	(c)	(d)	(e)	(f)	(g)		(h)	(i)
18. #1 TO 3/0 WIRE	4,352.00	4,352.00			4,352.00	100.00		217.60
19. 4/0 TO 350 MCM WIRE	30,510.00	30,510.00			30,510.00	100.00		1,525.50
20. 400 TO 600 MCM WIRE	75,300.00	75,300.00			75,300.00	100.00		3,765.00
21. LOW VOLTAGE CABLE	25,600.00	23,040.00	2,560.00		25,600.00	100.00		1,280.00
22. BOXES & J. BOXES	23,100.00	22,638.00			22,638.00	98.00	462.00	1,131.90
23. SWITCHES & RECEPTACL	16,910.00	10,146.00	1,691.00		11,837.00	70.00	5,073.00	591.85
24. OCCUPANCY SENSORS	4,550.00	2,730.00	1,365.00		4,095.00	90.00	455.00	204.75
25. FLOOR BOXES	3,855.00	3,855.00			3,855.00	100.00		192.75
26. CABLE TRAY	1,080.00	1,080.00			1,080.00	100.00		54.00
27. SWITCH GEAR	114,705.00	114,705.00			114,705.00	100.00		5,735.25
28. DISCONNECT SWITCHES	3,790.00	3,790.00			3,790.00	100.00		189.50
29. STARTERS	1,500.00	1,500.00			1,500.00	100.00		75.00
30. TRANSFORMERS	1,500.00	1,500.00			1,500.00	100.00		75.00
31. CLOCKS	42,695.00		34,156.00		34,156.00	80.00	8,539.00	1,707.80
32. SECURITY SYSTEM	100,100.00	50,050.00	10,010.00		60,060.00	60.00	40,040.00	3,003.00
33. SOUND SYSTEM	73,791.00	36,895.50	7,379.10		44,274.60	60.00	29,516.40	2,213.73
34. FIRE ALARM SYSTEM	63,541.00	47,655.75	9,531.15		57,186.90	90.00	6,354.10	2,859.35
PAGE TOTALS :	586,879.00 .00	429,747.25 .00	66,692.25 .00	.00 .00	496,439.50 .00		90,439.50 .00	24,821.98 .00

\*\*\* BILLING WORKSHEET, NOT INTENDED TO REPLACE AIA DOCUMENT G703 \*\*\*

---- CONTINUATION SHEET ----  
FOR

Application Number : 18  
Application Date : 04/30/2015  
Period To : 04/30/2015  
Architect's Project No. :

ITEM	SCHEDULED VALUE (c)	<---- WORK COMPLETED ----> PREVIOUS APPL (d)	THIS PERIOD (e)	STORED MATERIALS (f)	TOTAL COMPLETED & STORED TO DATE (g)	PCT	BALANCE TO FINISH (h)	RETAINAGE (i)
35. CCTV	88,410.00	44,205.00			44,205.00	50.00	44,205.00	2,210.25
36. GENERATOR	129,100.00	127,809.00			127,809.00	99.00	1,291.00	6,390.45
37. LIGHTNING PROTECTION	42,250.00	14,787.50	4,225.00		19,012.50	45.00	23,237.50	950.63
38. NETWORKING	166,000.00			157,700.00	157,700.00	95.00	8,300.00	7,885.00
39. CONCRETE PADS	16,820.00	16,820.00			16,820.00	100.00		841.00
40. TRENCHING	28,200.00	23,970.00			23,970.00	85.00	4,230.00	1,198.50
41. LIGHT POLE BASES	15,215.00	7,607.50			7,607.50	50.00	7,607.50	380.38
42. LIGHT POLE	20,315.00		10,157.50		10,157.50	50.00	10,157.50	507.88
43. LIGHT FIXTURES	290,100.00	232,080.00	52,218.00		284,298.00	98.00	5,802.00	14,214.90
44. LAMPS	8,700.00	8,700.00			8,700.00	100.00		435.00
45. HOOK-UP EQUIPMENT	6,105.00	5,494.50	305.25		5,799.75	95.00	305.25	289.99
46. DATA COMMUNICATIONS	165,475.00	132,380.00	16,547.50		148,927.50	90.00	16,547.50	7,446.38
47. TRAINING OF EQUIPMEN	4,000.00						4,000.00	
48. CLOSE OUT DOCUMENTS	2,000.00						2,000.00	
49. AS BUILT DRAWINGS	1,000.00						1,000.00	
50. CHANGE ORDER VE#1	29,807.35	29,807.35			29,807.35	100.00		1,490.37
51. CHANGE ORDER E002	-25,105.30						-25,105.30	
PAGE TOTALS :	988,392.05 .00	643,660.85 .00	83,453.25 .00	157,700.00 .00	884,814.10 .00		103,577.95 .00	44,240.73 .00

\*\*\* BILLING WORKSHEET, NOT INTENDED TO REPLACE AIA DOCUMENT G703 \*\*\*

-----CONTINUATION SHEET-----  
FOR

Application Number : 18  
Application Date : 04/30/2015  
Period To : 04/30/2015  
Architect's Project No. :

ITEM	SCHEDULED VALUE (c)	<----- WORK COMPLETED -----> PREVIOUS APPL (d)	THIS PERIOD (e)	STORED MATERIALS (f)	TOTAL COMPLETED & STORED TO DATE (g)	PCT	BALANCE TO FINISH (h)	RETAINAGE (i)
52. CHANGE ORDER E003	3,818.95	3,818.95			3,818.95	100.00		190.95
53. CHANGE ORDER E0004	4,080.51	4,080.51			4,080.51	100.00		204.03
54. CHANGE ORDER E005	9,380.48						9,380.48	

PAGE TOTALS :

17,279.94

7,899.46

.00

.00

7,899.46

9,380.48

394.98

JOB TOTALS :

2,201,916.99

1,682,222.56

157,224.00

157,700.00

1,997,146.56

204,770.43

99,857.37

\*\*\* BILLING WORKSHEET, NOT INTENDED TO REPLACE AIA DOCUMENT G703 \*\*\*

## PAYMENT APPLICATION

TO: Plum Borough School District  
900 Elicker Road  
900 Elicker Road  
Plum, PA 15239

FROM: Vrabel Plumbing Company, LLC  
Vrabel Plumbing Company, LLC  
13 Dewey Lane  
Gibsonia PA 15044  
FOR: Plumbing Construction

PROJECT Plum-New Holiday Park  
NAME AND New Holiday Park Elementary School  
LOCATION: New Holiday Park Elementary School  
313 Holiday Park Drive  
Plum, PA 15239  
ARCHITECT: L Robert Kimball & Associates  
615 West Highland Avenue P.O. Box 1000  
Ebensburg, PA 15931

APPLICATION # 15  
PERIOD THRU: 04/21/2015  
PROJECT #s: 13-0055-02  
DATE OF CONTRACT: 11/07/2013  
DATE OF CONTRACT: 11/07/2013

Page 1

Distribution to:

OWNER  
ARCHITECT

CONTRACTOR

## CONTRACTOR'S SUMMARY OF WORK

(1) the Work has been performed as required in the Contract Documents, (2) all sums previously paid to

Application is made for payment as shown below.  
Continuation Page is attached.

1. CONTRACT AMOUNT	\$968,700.00
2. SUM OF ALL CHANGE ORDERS	\$7,308.00
3. CURRENT CONTRACT AMOUNT (Line 1 +/- 2)	\$976,008.00
4. TOTAL COMPLETED AND STORED (Column G on Continuation Page)	\$968,433.00
5. RETAINAGE:	
a. 5.00% of Completed Work (Columns D + E on Continuation Page)	\$48,422.00
b. 5.00% of Material Stored (Column F on Continuation Page)	\$0.00
Total Retainage (Line 5a + 5b or Column I on Continuation Page)	\$48,422.00
6. TOTAL COMPLETED AND STORED LESS RETAINAGE (Line 4 minus Line 5 Total)	\$920,011.00
7. LESS PREVIOUS PAYMENT APPLICATIONS	\$904,728.20
8. PAYMENT DUE	\$15,282.80
9. BALANCE TO COMPLETION (Line 3 minus Line 6)	\$55,997.00

SUMMARY OF CHANGE ORDERS	ADDITIONS	DEDUCTIONS
Total changes approved in previous months	\$7,308.00	\$0.00
previous months		
Total approved this month	\$0.00	\$0.00
TOTALS	\$7,308.00	\$0.00
NET CHANGES	\$7,308.00	

PAYMENT APPLICATION

Contractor's signature below is his assurance to Owner, concerning the payment herein applied for, that:

(1) the Work has been performed as required in the Contract Documents, (2) all sums previously paid to

Contractor under the Contract have been used to pay Contractor's costs for labor, materials and other obligations under the Contract for Work previously paid for, and (3) Contractor is legally entitled to this payment.

CONTRACTOR: Vrabel Plumbing Company, LLC

By:

Date: 04/21/2015

State of: Pennsylvania

County of: Allegheny

Subscribed and sworn to before  
me this 21st day of April 2015

Notary Public:

My Commission Expires:

## ARCHITECT'S CERTIFICATION

Architect's signature below is his assurance to Owner, concerning the payment herein applied for, that: (1) Architect has inspected the Work represented by this Application, (2) such Work has been completed to the extent indicated in this Application, and the quality of workmanship and materials conforms with the Contract Documents, (3) this Application for Payment accurately states the amount of Work completed and payment due therefor, and (4) Architect knows of no reason why payment should not be made.

CERTIFIED AMOUNT.....

(If the certified amount is different from the payment due, you should attach an explanation. Initial all the figures that are changed to match the certified amount.)

ARCHITECT:

By:

Date:

Neither this Application nor payment applied for herein is assignable or negotiable. Payment shall be made only to Contractor, and is without prejudice to any rights of Owner or Contractor under the Contract Documents or otherwise.

Quantum Software Solutions, Inc. Document



RECEIVED  
APR 20 2015



Account number	Telephone number	Invoice date
021655315- <i>ms</i>	724-733-0905	April 14, 2015

Please call Windstream Communications toll free or visit our website.  
 For Sales/Billing/Account Changes: 1-800-843-9214  
 For Repair/Technical Support: 1-866-990-3282  
 Website: [www.windstream.com](http://www.windstream.com)

THE PLUM BOROUGH SCHOOL DISTRICT  
 C/O ERIC RYAN CORPORATION  
 PO BOX 980  
 ELLWOOD CITY PA 16117-0980

SCANNED

APR 20 2015

ERIC RYAN CORP

Service At-A-Glance

Previous Bill	\$100.75
Payments/Adjustments thru 04/10	\$100.75 CR
Amount Previously Due	\$0.00
Current Charges Due - 05/04/15	\$100.79
<b>Total Amount Due</b>	<b>\$100.79</b>

Use of the Services constitutes your agreement to Windstream's Terms and Conditions maintained at [www.windstream.com/terms](http://www.windstream.com/terms), or you may request a copy by calling the number at the top of the bill. See "Windstream Customer Message" section on this bill for any recent changes to Windstream's Terms and Conditions. If you are a business customer with an existing contract, those contract terms will control.

AMOUNT	14403
APPROVAL	100 9

Pay My Bill

**On-line:** For easy payments 24 hours a day, visit [www.windstreamonline.com](http://www.windstreamonline.com).  
**In person:** To find a retail store location near you, visit [www.windstream.com/support](http://www.windstream.com/support).  
**By Mail:** Send your check and payment slip to the address below.  
**By Phone:** For automated payments or to speak to a representative, call 1-800-537-7755.

*1193  
4-23-15*

*mkw 4-22-15*

Introducing  
**NEW**  
**Business Bundles**

---

**Find out more Today!**

**Call**  
**877.316.4082**

**or Visit**  
[windstreambusiness.com/bundles](http://windstreambusiness.com/bundles)

Windstream provides online billing at [www.windstreamonline.com](http://www.windstreamonline.com)  
 Your PIN is 214160828.

**PROTECT YOUR ACCOUNT TODAY!** Windstream's Customer Account Protection Plan (CAPP) protects you from unauthorized changes or access to your account by requiring a passcode. You may establish your passcode online at [www.windstream.com/CAPP](http://www.windstream.com/CAPP) or call 877-740-6853 to speak with a representative.

BASIC LOCAL SERVICE	41.39
HIGH-SPEED INTERNET	49.99
NON-BASIC SERVICE	9.41

TOTAL 100.79

IMPORTANT INFORMATION

Non-payment of the TOTAL for BASIC charges shown above could result in disconnection of those services and may be subject to collection actions.

Non-payment of all other charges for services listed above may result in the disconnection of these services and may be subject to collection actions, but will not result in the disconnection of basic local service.

BRE

Regency Park

(Series 2014 RP)







A.G. Mauro Company  
 310 Alpha Drive  
 Pittsburgh, PA 15238

Invoice Number: PSI108638

Invoice Date: 04/13/15

Phone: 412-782-6600

Fax: 412-963-6913

Page: 1

**RECEIVED**  
 APR 15 2015

BY: \_\_\_\_\_

**Invoice**

Bill To: PLUM BORO SCHOOL DIST  
 CENTRAL ADMIN / ACCTS. PAYABLE  
 900 ELICKER ROAD  
 PITTSBURGH, PA 15239  
 ARDIS

Job Name: Holiday Park Elementary

Ship To:

Holiday Park Elementary

*New panic hardware*

900 Elicker Road

HP/Bob Hallerin 412-798-6354

Pittsburgh, PA 15239

Jim McQuire

Ship Via WILL CALL  
 Ship Date 04/10/15  
 Due Date 05/13/15  
 Terms Net 30 Days  
 Contract No: P6529-0

Customer ID C01192  
 P.O. Number TO FOLLOW  
 P.O. Date 03/30/15  
 Our Order No. SO100511  
 SalesPerson Angelo Papale

Item/Description	Unit	Short	Order Qty	Quantity
		Code		
LABOR Subout Labor	EAC		1	1

*GOB Funds*  
 ACC  
 \$2,420.00  
 APPROVAL: *[Signature]* | *mcc 4-16-15*

Amount Subject to Sales Tax  
 0.00

Amount Exempt from Sales Tax  
 2,420.00

Subtotal: 2,420.00  
 Invoice Discount: 0.00  
 Total Sales Tax: 0.00

Total: 2,420.00

RECEIVED  
APR 29 2015

# ANDREWS & PRICE

1500 Ardmore Boulevard  
Suite 506  
Pittsburgh, PA 15221  
TEL. (412) 243-9700  
FAX (412) 243-9660

*BP*  
*4/29/15*

Plum Borough School District  
Dr. Timothy Glasspool  
900 Elicker Rd.  
Plum, PA 15239

Billing Date: March 31, 2015  
Client No.: 59000

59000.0  
59000.1  
59000.2  
59000.3  
59000.39  
59000.50  
59000.53  
59000.56

59000.57      Adlai Stevenson      50.00

59000.59  
59000.65  
59000.73  
59000.75

59000.76      Bus Garage      830.00

59000.78      Regency Park      320.00

59000.79  
59000.80  
59000.81

59008.3  
59008.43  
59009.8  
59009.9  
59010.3  
59011.2  
59011.3

Balance Due

AMOUNT	
APPROVAL	

PLUM BOROUGH SCHOOL DISTRICT  
900 ELICKER RD (MICHAEL BREWER)  
PITTSBURGH, PA 15239

Service Address:  
1460 GREENSBURG RD LEFT  
PITTSBURGH, PA 15239

April 13, 2015

Account Number: 2882-944-795

Dear Sir or Madam,

*Security Depo. #1-66*

Your request for electric service has been reviewed. Based on your payment history with Duquesne Light, you are required to pay the following to establish electric service:

Security deposit of	\$546.00
Additional fee(s) of	\$0.00
Total amount due in certified funds (No personal checks)	\$546.00*

\* If you have already called Duquesne Light and paid the amount due, thank you for your payment.

Duquesne Light will pay 0.11% annual simple interest on the security deposit for the period in which the deposit is held. The deposit will be held until you establish a satisfactory payment history. Deposits secured from other than residential customers shall be returned to the depositor upon annual review provided such depositor shall have paid undisputed bills during those 12 months without having service terminated and without having paid the bill subsequent to the due date so long as the customer is not currently delinquent.

Duquesne Light may waive the security deposit required if you provide an acceptable third-party guarantor. The guarantor must agree in writing (the agreement to be provided by Duquesne Light) to pay for all unpaid electric service if you do not pay your bill.

Duquesne Light Company is regulated by the Pennsylvania Public Utility Commission. You have the right to contact the Pennsylvania Public Utility Commission by calling 1-800-692-7380 or writing to P.O. Box 3265, Harrisburg, PA 17105-3265.

The Federal Equal Credit Opportunity Act prohibits creditors from discriminating against credit applicants on the basis of race, color, religion, national origin, sex, marital status, age (provided the applicant has the capacity to enter into a binding contract); because all or part of the applicant's income derives from any public assistance programs; or because the applicant has in good faith exercised any right under the Consumer Credit Protection Act. The Federal agency that administers compliance with this law concerning Duquesne Light Company is the Federal Trade Commission.

Sincerely,

Customer Care Department



Hours - Monday through Friday  
 8:00 a.m. to 5:00 p.m.  
 Payment by Web: [www.duquesnelight.com](http://www.duquesnelight.com)  
 Payment by Phone: 1-866-526-0815  
 (PAYMENT MUST THEN BE REPORTED TO DLC)  
 Payment by Mail:  
 Customer Care Applications Dept. 6-9  
 Duquesne Light Company  
 411 7th Avenue  
 Pittsburgh, PA 15267-0001

PLUM BOROUGH SCHOOL DISTRICT  
 900 ELICKER RD (MICHAEL BREWER)  
 PITTSBURGH, PA 15239

Service Address:  
 1460 GREENSBURG RD OFFC  
 NEW KENSINGTON, PA 15068-2053

April 13, 2015

Account Number: 2882-944-795  
*Security Deposit 2-136*

Dear Sir or Madam,

Your request for electric service has been reviewed. Based on your payment history with Duquesne Light, you are required to pay the following to establish electric service:

Security deposit of	\$681.00
Additional fee(s) of	\$0.00
Total amount due in certified funds (No personal checks)	\$681.00*

\* If you have already called Duquesne Light and paid the amount due, thank you for your payment.

Duquesne Light will pay 0.11% annual simple interest on the security deposit for the period in which the deposit is held. The deposit will be held until you establish a satisfactory payment history. Deposits secured from other than residential customers shall be returned to the depositor upon annual review provided such depositor shall have paid undisputed bills during those 12 months without having service terminated and without having paid the bill subsequent to the due date so long as the customer is not currently delinquent.

Duquesne Light may waive the security deposit required if you provide an acceptable third-party guarantor. The guarantor must agree in writing (the agreement to be provided by Duquesne Light) to pay for all unpaid electric service if you do not pay your bill.

Duquesne Light Company is regulated by the Pennsylvania Public Utility Commission. You have the right to contact the Pennsylvania Public Utility Commission by calling 1-800-692-7380 or writing to P.O. Box 3265, Harrisburg, PA 17105-3265.

The Federal Equal Credit Opportunity Act prohibits creditors from discriminating against credit applicants on the basis of race, color, religion, national origin, sex, marital status, age (provided the applicant has the capacity to enter into a binding contract); because all or part of the applicant's income derives from any public assistance programs; or because the applicant has in good faith exercised any right under the Consumer Credit Protection Act. The Federal agency that administers compliance with this law concerning Duquesne Light Company is the Federal Trade Commission.

Sincerely,

Customer Care Department

Hours - Monday through Friday  
8:00 a.m. to 5:00 p.m.  
Payment by Web: [www.duquesnelight.com](http://www.duquesnelight.com)  
Payment by Phone: 1-866-526-0815  
(PAYMENT MUST THEN BE REPORTED TO DLC)  
Payment by Mail:  
Customer Care Applications Dept. 6-9  
Duquesne Light Company  
411 7th Avenue  
Pittsburgh, PA 15267-0001

PLUM BOROUGH SCHOOL DISTRICT  
900 ELICKER RD (MICHAEL BREWER)  
PITTSBURGH, PA 15239

Service Address:  
1460 GREENSBURG RD RGHT  
PITTSBURGH, PA 15239

April 13, 2015

Account Number: 2882-944-795

*Security Deposit A 3-B C*

Dear Sir or Madam,

Your request for electric service has been reviewed. Based on your payment history with Duquesne Light, you are required to pay the following to establish electric service:

Security deposit of	\$3,320.00
Additional fee(s) of	\$0.00
Total amount due in certified funds (No personal checks)	\$3,320.00*

\* If you have already called Duquesne Light and paid the amount due, thank you for your payment.

Duquesne Light will pay 0.11% annual simple interest on the security deposit for the period in which the deposit is held. The deposit will be held until you establish a satisfactory payment history. Deposits secured from other than residential customers shall be returned to the depositor upon annual review provided such depositor shall have paid undisputed bills during those 12 months without having service terminated and without having paid the bill subsequent to the due date so long as the customer is not currently delinquent.

Duquesne Light may waive the security deposit required if you provide an acceptable third-party guarantor. The guarantor must agree in writing (the agreement to be provided by Duquesne Light) to pay for all unpaid electric service if you do not pay your bill.

Duquesne Light Company is regulated by the Pennsylvania Public Utility Commission. You have the right to contact the Pennsylvania Public Utility Commission by calling 1-800-692-7380 or writing to P.O. Box 3265, Harrisburg, PA 17105-3265.

The Federal Equal Credit Opportunity Act prohibits creditors from discriminating against credit applicants on the basis of race, color, religion, national origin, sex, marital status, age (provided the applicant has the capacity to enter into a binding contract); because all or part of the applicant's income derives from any public assistance programs; or because the applicant has in good faith exercised any right under the Consumer Credit Protection Act. The Federal agency that administers compliance with this law concerning Duquesne Light Company is the Federal Trade Commission.

Sincerely,

Customer Care Department